



## Boulevard Drive, NW9

£250,000

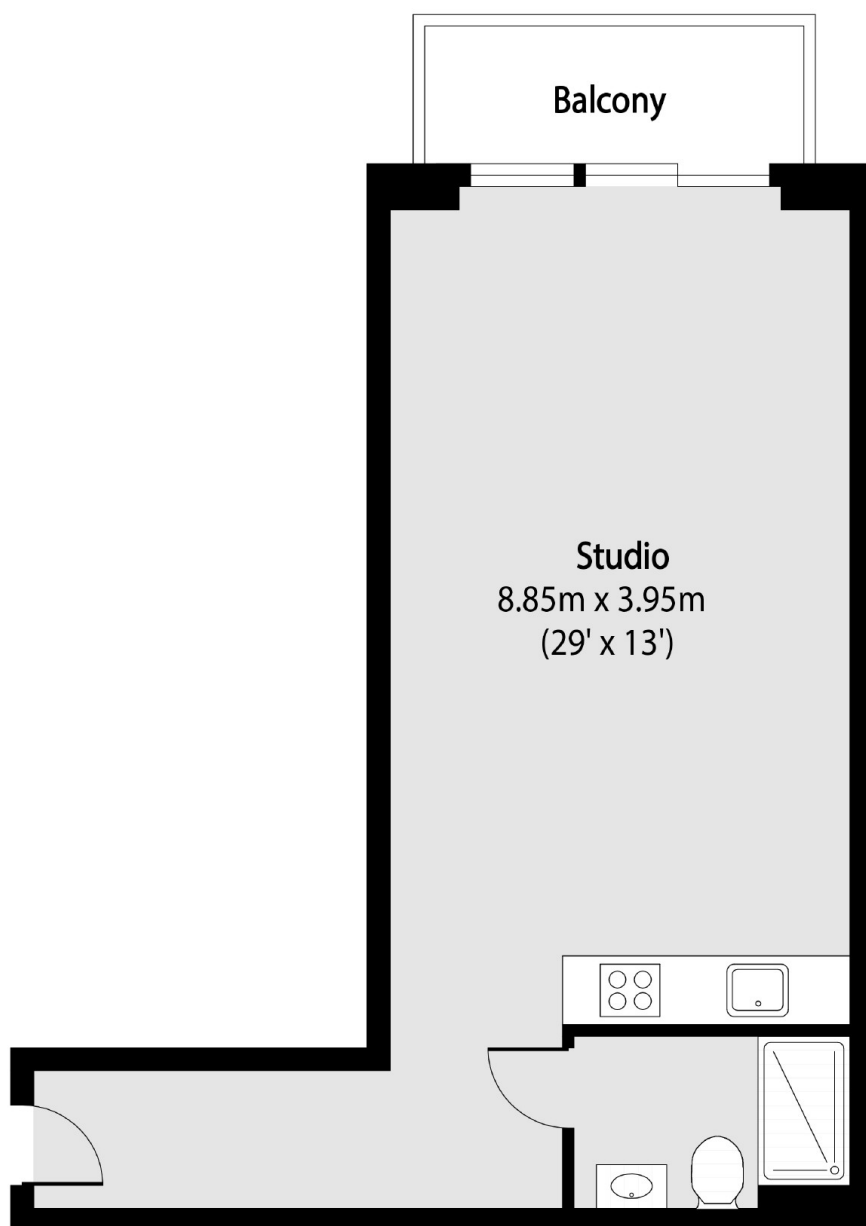
Dexters are proud to present this extremely spacious studio located in the prestigious Beaufort Park. This lovely home is in great condition throughout, has a private terrace, private parking space and has no chain.

This flat is located in the prestigious Ascent House at Beaufort Park, minutes from Colindale Underground Station in addition to the many amenities in the development.

### Features

- Spacious Studio
- Private Terrace
- Private Parking Space
- No Chain
- Great Condition
- Modern Development

# Boulevard Drive, London, NW9



Total area (approx): 38.92 sq m (419 sq. ft)

Balcony total area (approx): 3.96 sq m (43 sq. ft)

**Dexters**

Hendon  
18 Central Circus  
London  
NW4 3AS  
Sales  
020 8545 8586

Energy Rating: B. We aim to make our particulars both accurate and reliable. However they are not guaranteed; nor do they form part of an offer or contract. If you require clarification on any points then please contact us, especially if you're traveling some distance to view. Please note that appliances and heating systems have not been tested and therefore no warranties can be given as to their good working order.

 **RICS** | Regulated  
Estate Agent  
and Letting Agent

[dexters.co.uk](https://www.dexters.co.uk)