



## Guardian Avenue, NW9

### £425,000

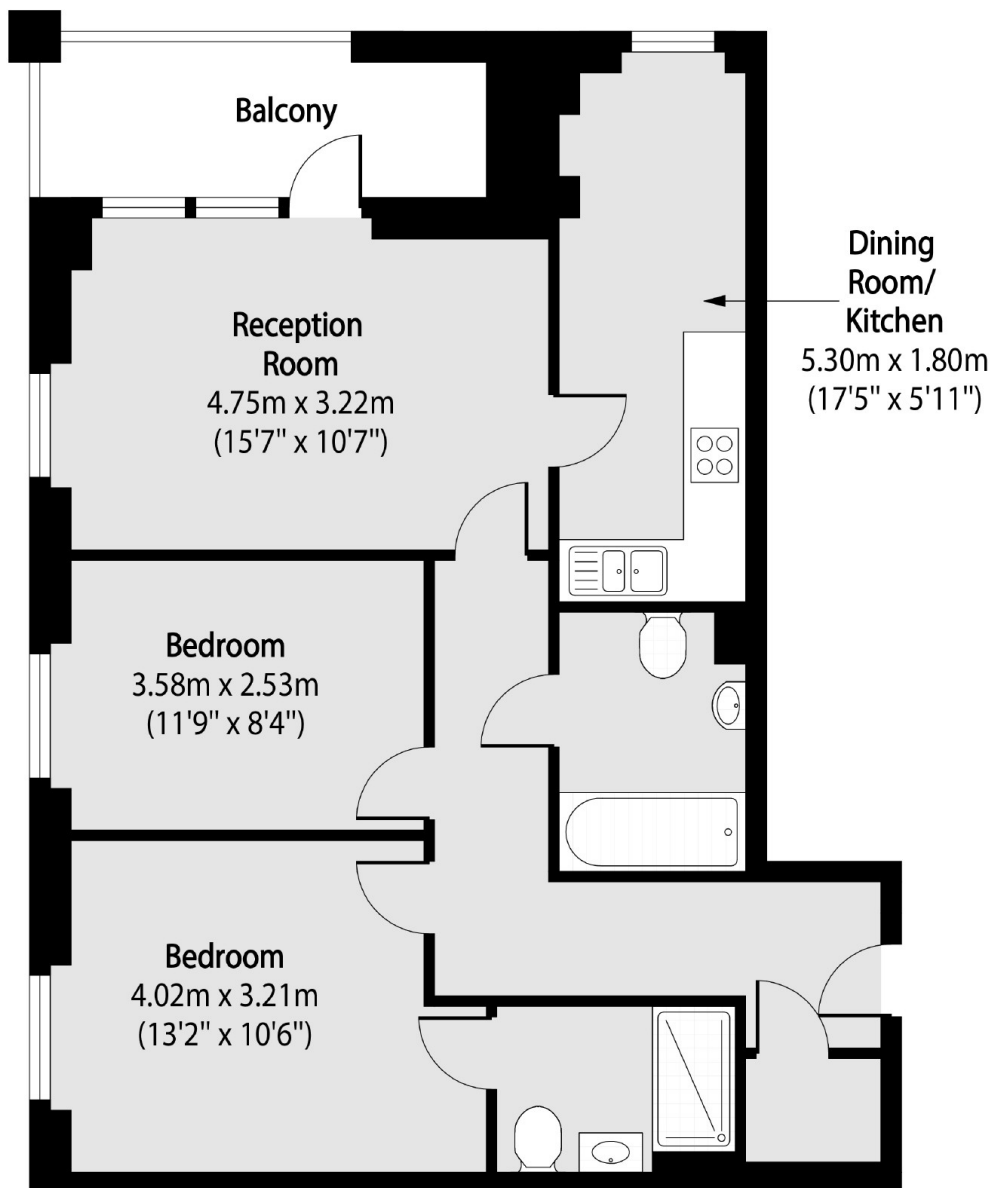
A spacious two double bedroom flat situated within this handsome modern block. This stunning home is in great condition throughout, comes with a private balcony, two bathrooms and is round the corner from Colindale Tube Station.

Guardian Avenue is part of the popular Pulse development, situated moments from Colindale Underground Station and from the restaurants and cafés on Colindale Avenue.

### Features

- Two Double Bedrooms
- Two Bathrooms
- Private Balcony
- Modern Development
- Excellent Transport Links
- Good Condition

# Guardian Avenue, London, NW9



Total area (approx): 66.75 sq m (718 sq. ft)

Balcony total area (approx): 6.15 sq m (66 sq. ft)