



## Church Road, NW4

£325,000

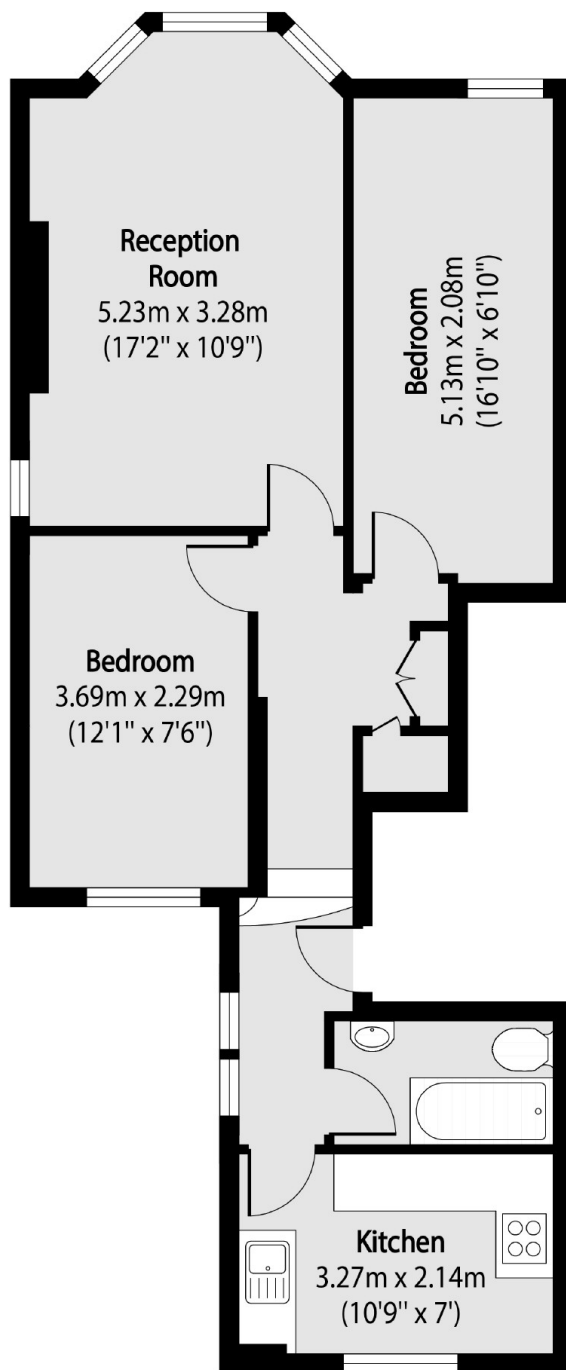
A fantastic two double bedroom flat set within this attractive Victorian conversion. This charming home is in great condition throughout, has an allocated parking space, in a great location for transport and is offered chain free.

Church Road is an excellent location, which is very nearby the shops, cafés and restaurants on Brent Street. Hendon Central Underground Station is also close by (Northern Line).

### Features

- No Chain
- Period Conversion
- Two Double Bedrooms
- Allocated Parking
- Great Condition
- Separate Kitchen

# Church Road, London, NW4



Total area (approx): 55.71 sq m (600 sq. ft)