



Finchley Lane, NW4

£625,000

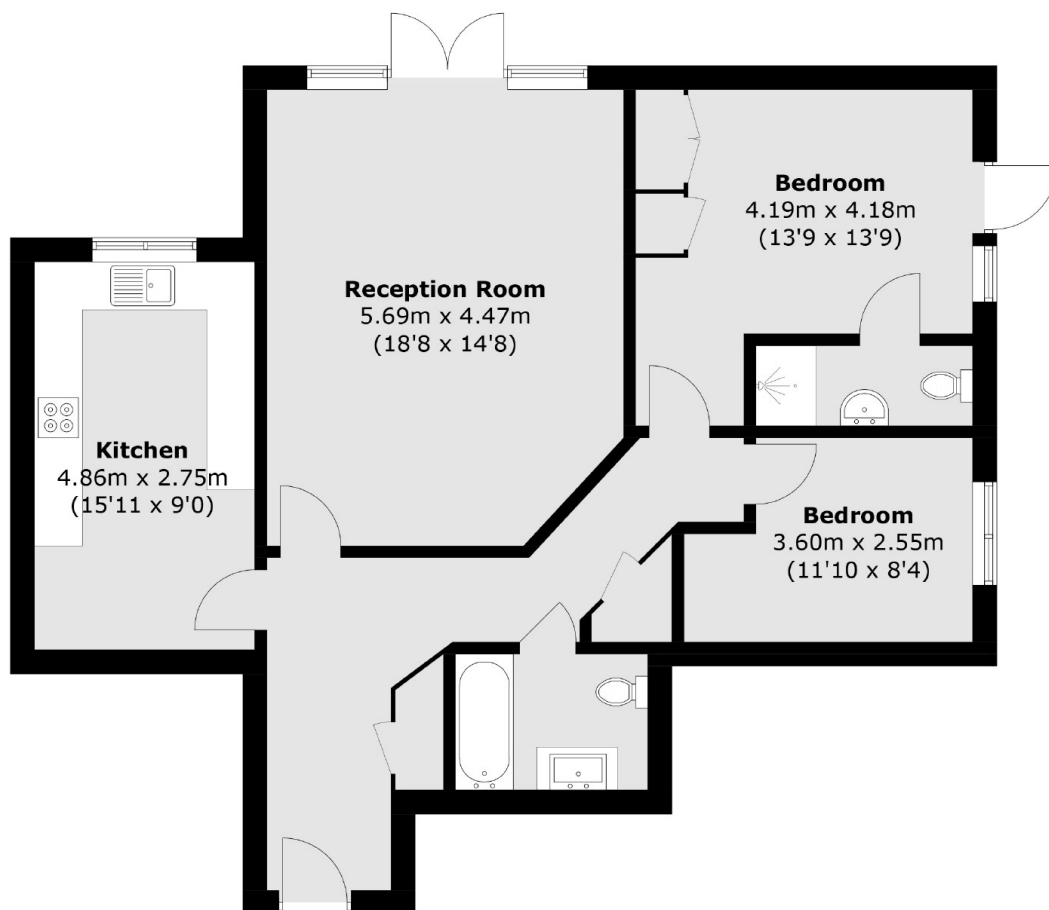
A fantastic ground floor apartment located in Sundial House on Finchley Lane. This excellent home has two large double bedrooms, two bathrooms, great condition and has two private terraces, one of which leads onto communal gardens.

This stunning apartment on Finchley Lane is positioned within easy reach of the various cafés, shops and restaurants on Brent Street. Hendon Central and Finchley Central (Northern Line) are also nearby.

Features

- Two Double Bedrooms
- Two Bathrooms
- Two Private Terraces
- Large Communal Gardens
- Ground Floor
- Chain Free

Finchley Lane, London, NW4



Total area (approx.): 86.0 sq. m (925.7 sq. ft)