



Capitol Way, NW9

£375,000

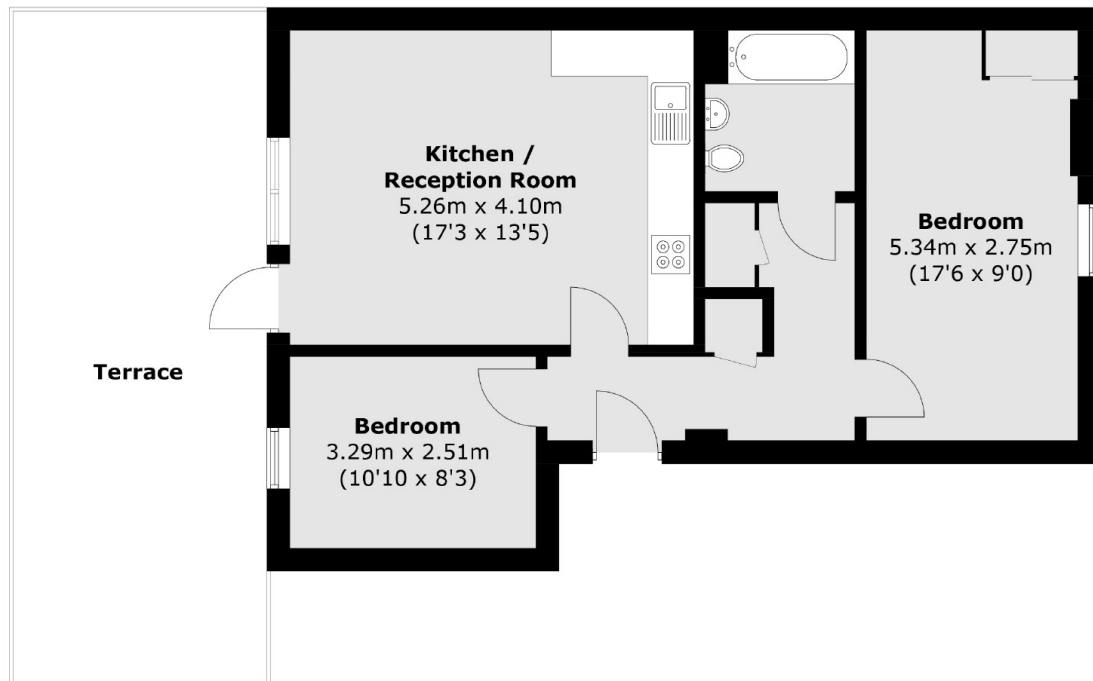
An awesome two bedroom flat set within this popular modern block. This bright and spacious flat has one bathroom, a private parking space, comes with no chain and has a huge private terrace with stunning views.

Avery Court is located close to supermarkets such as Asda and Morrisons as well as Bang Bang Oriental Food Hall, great transport links including bus routes and Colindale Station (Northern Line) and local Gym facilities and the range amenities of Beaufort Park.

Features

- Two Bedrooms
- Large Private Terrace
- Private Parking
- Lovely Views
- No Chain
- Great Condition

Capitol Way, London, NW9



Total area (approx.): 59.6 sq. m (641.5 sq. ft)
Terrace area : 28.9 sq. m (311.0 sq. ft)