



Capitol Way, NW9

£400,000

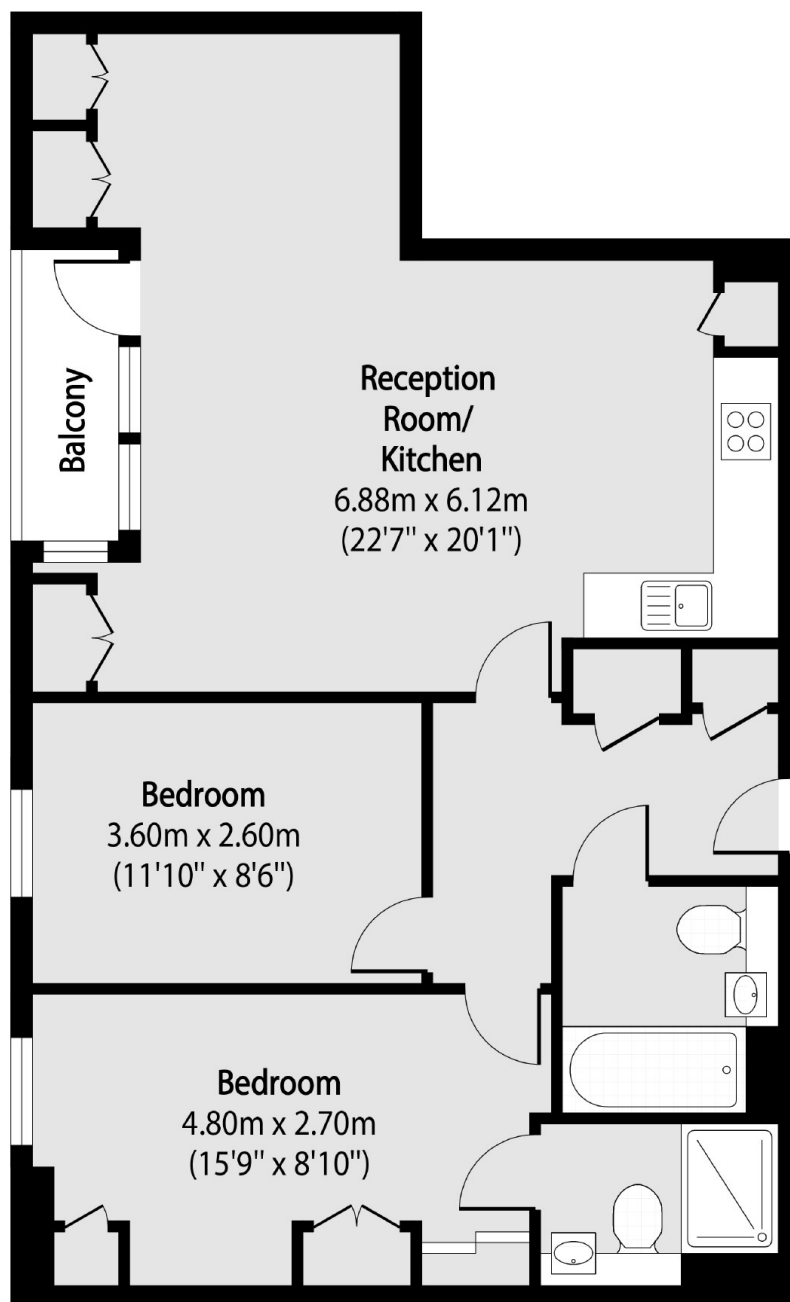
An excellent two double bedroom flat set within this desirable modern building. This home comes with two bathrooms, a private parking space, new custom wardrobes and a private balcony overlooking the grounds.

Dara House is located close to supermarkets such as Asda and Morrisons as well as Bang Bang Oriental Food Hall, has great transport links including bus routes and Colindale Station (Northern Line) and local Gym facilities and the range amenities of Beaufort Park.

Features

- Two Double Bedrooms
- Two Bathrooms
- Private Parking Space
- Chain Free
- Private Balcony
- Concierge

Capitol Way, London, NW9



Total area (approx): 68.98 sq m (742 sq. ft)

Balcony total area (approx): 2.43 sq m (26.16 sq. ft)

Dexters

Hendon
18 Central Circus
London
NW4 3AS
Sales
020 8545 8586

Energy Rating: B. We aim to make our particulars both accurate and reliable. However they are not guaranteed; nor do they form part of an offer or contract. If you require clarification on any points then please contact us, especially if you're traveling some distance to view. Please note that appliances and heating systems have not been tested and therefore no warranties can be given as to their good working order.

 **RICS** | Regulated
Estate Agent
and Letting Agent

dexters.co.uk