



Dehar Crescent, NW9

£600,000

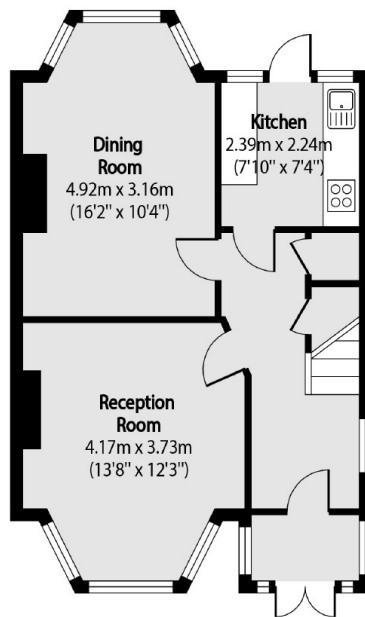
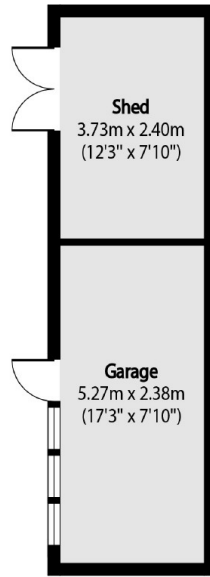
A fantastic three bedroom semi-detached family home located in a quiet cul-de-sac in West Hendon. This excellent home has a long driveway for three cars, masses of potential to extend and a large garden.

Dehar Crescent is a peaceful cul-de-sac located close to the Welsh Harp Nature Reserve and Reservoir and within half a mile of Hendon Thameslink station.

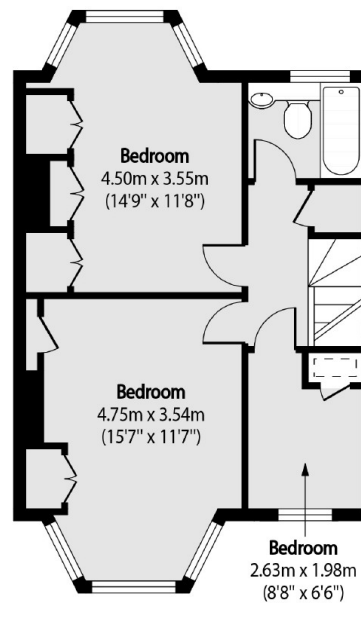
Features

- Semi-Detached House
- Three Bedrooms
- Long Driveway
- Huge Potential to Extend
- Quiet Location
- Close to the Welsh Harp

Dehar Crescent, London, NW9



Ground Floor



First Floor

Total area (approx): 90.96 sq m (979 sq. ft)

Shed Total area (approx): 8.88 sq m (96 sq. ft)

Garage total area (approx): 12.72 sq m (137 sq. ft)