



Shearwater Drive, NW9 £300,000

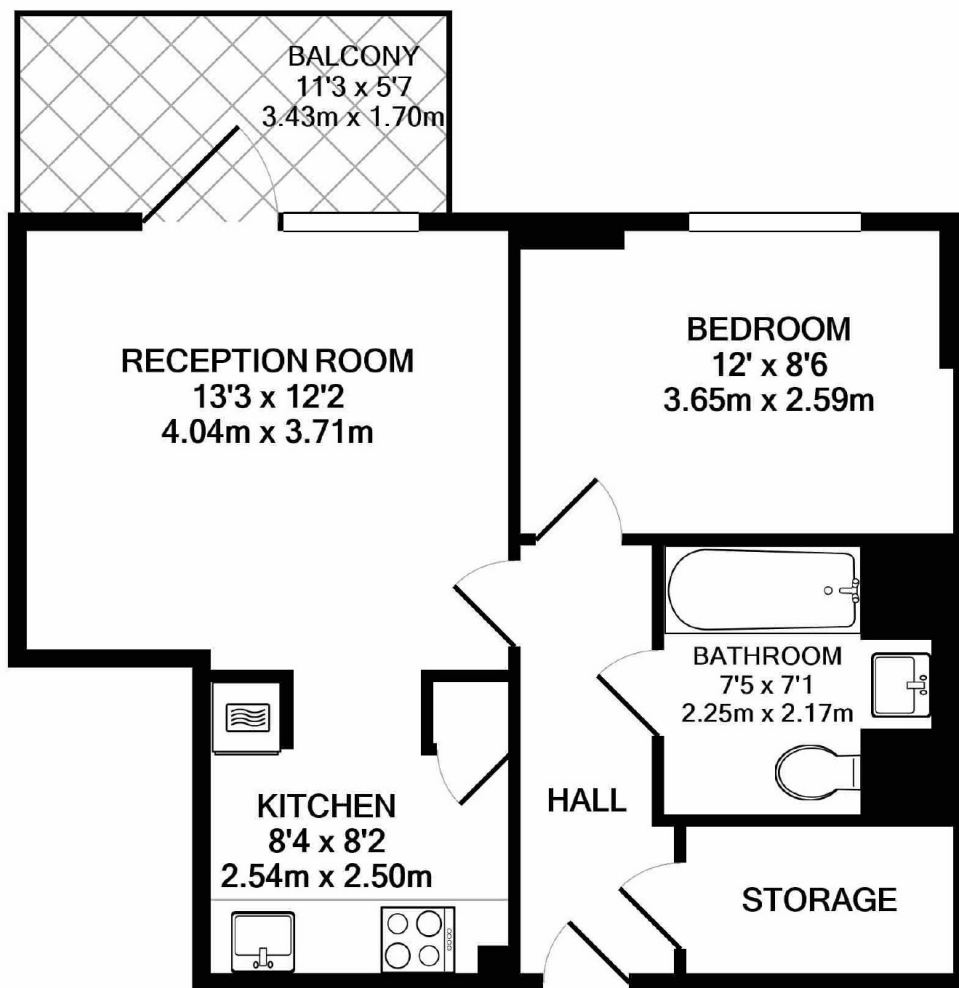
A beautifully presented bright and spacious first floor one bedroom apartment, benefitting from one double bedroom, a large open plan kitchen/reception room, bathroom and private balcony.

This popular modern development is located close to Welsh Harp Nature Reserve and Reservoir and within easy access of Hendon Mainline Station.

Features

- Modern Development
- One Bedroom
- Private Balcony
- Parking
- Chain Free
- Great Transport Links

Shearwater Drive,
London, NW9



FIRST FLOOR

TAWNY COURT NW9
TOTAL APPROX. FLOOR AREA 478 SQ.FT. (44.4 SQ.M.)
Measurements are approximate. Not to scale. Illustrative purposes only

