



## Robin Lane, NW4

### £550,000

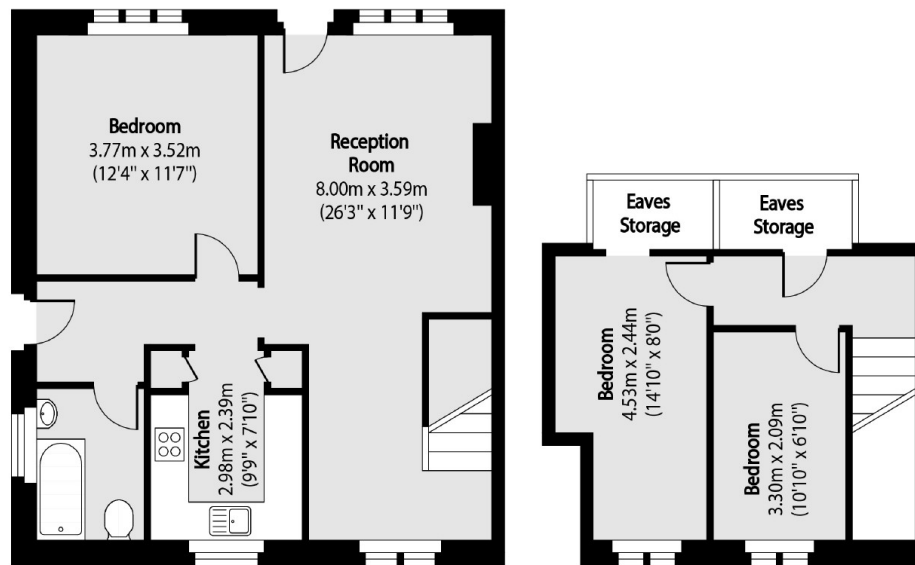
A fantastic and rarely available three bedroom chalet bungalow on Robin Lane. This property comes with a large driveway, bathroom, kitchen, huge private garden and lots of potential to extend.

Located in this quiet cul-de-sac, near to Hendon Golf Course and Windsor Open Space and is close proximity to Parsons Street and Brent Street. This property has good connections to the A1, M1 and A406.

### Features

- Chalet Bungalow
- Three Bedrooms
- Private Driveway
- Large Garden
- Lots of Potential
- Bathroom

# Robin Lane, Hendon, NW4



Ground Floor

First Floor

Total area (approx): 82.23 sq m (885 sq. ft)

Eaves Storage Total area (approx): 4.51 sq m (49 sq. ft)