



Beaufort Square, NW9

£775,000

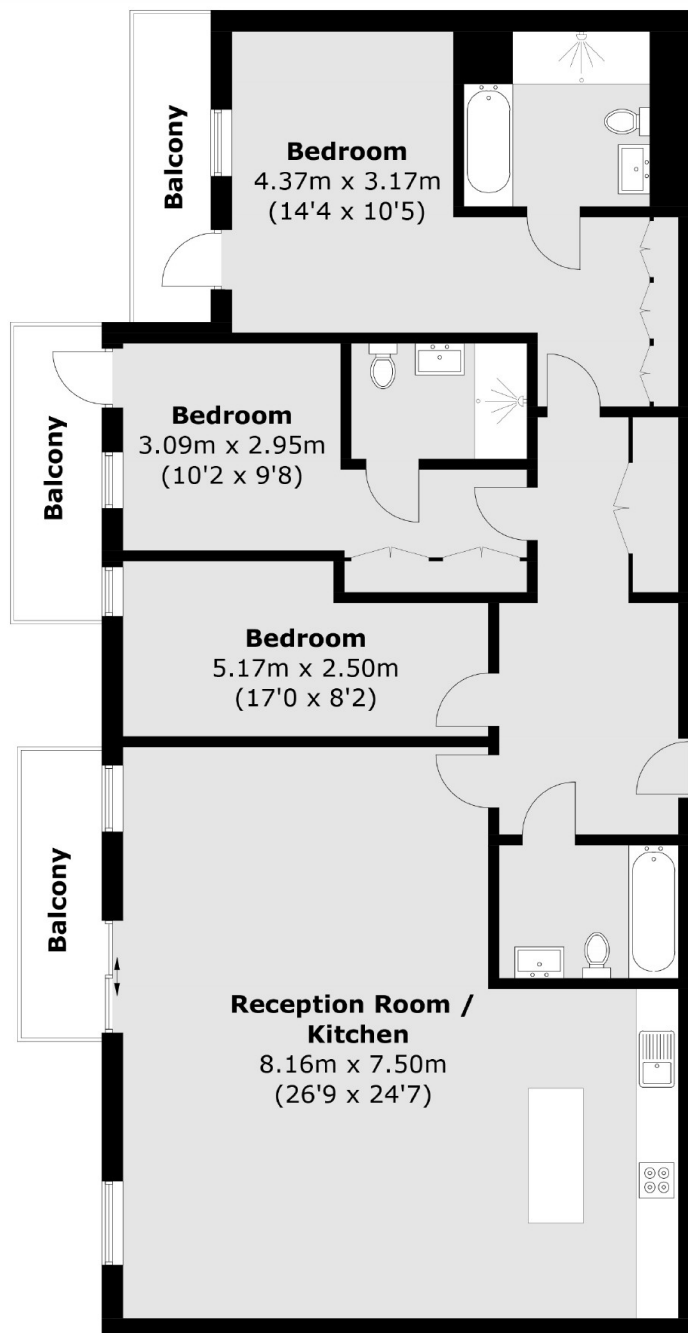
An absolutely stunning three double bedroom apartment set within this handsome modern block. This beautifully bright and airy apartment has three balconies, three bathrooms and comes with parking.

Beaufort Square is conveniently located within close access of Colindale Underground Station (approx 0.6 miles) and many local amenities.

Features

- Three Double Bedrooms
- Chain Free
- Parking
- Three Balconies
- Bright and Spacious
- Three Bathrooms

Beaufort Square, London, NW9



Total area (approx.): 138.7 sq. m (1492.9 sq. ft)
Balconies area (approx.): 14.8 sq. m (159.3 sq. ft)