



## Great North Way, NW4

£375,000

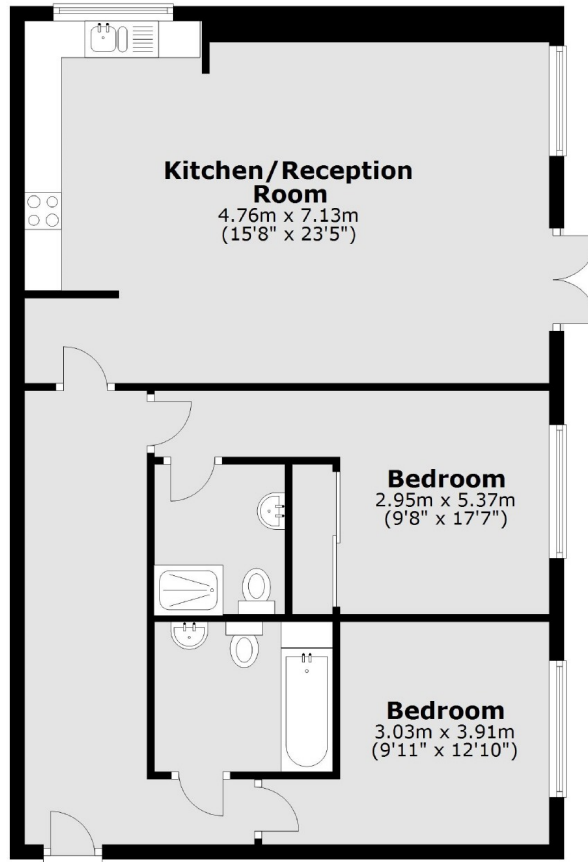
A fantastic two bedroom ground floor apartment, benefiting from two double bedrooms, two bathrooms and a large semi-open plan kitchen/reception room.

Liberty Court is a unique modern development conveniently located close to main arterial routes, Copthall Leisure Centre and the exclusive Laboratory Health Club and Spa.

### Features

- Ground Floor Flat
- Two Double Bedrooms
- Two Bathrooms (One En-Suite)
- Large Living Room
- Off-Street Parking
- Chain Free

# Great North Way, London, NW4



Total area: approx. 79.9 sq. metres (859.6 sq. feet)