

Boulevard Drive, NW9

£450,000

Situated within the beautiful developments of Beaufort Park is this three bedroom flat with a large open plan kitchen/reception, a full family bathroom plus an additional guest WC. The development has access to communal gardens and underground parking.

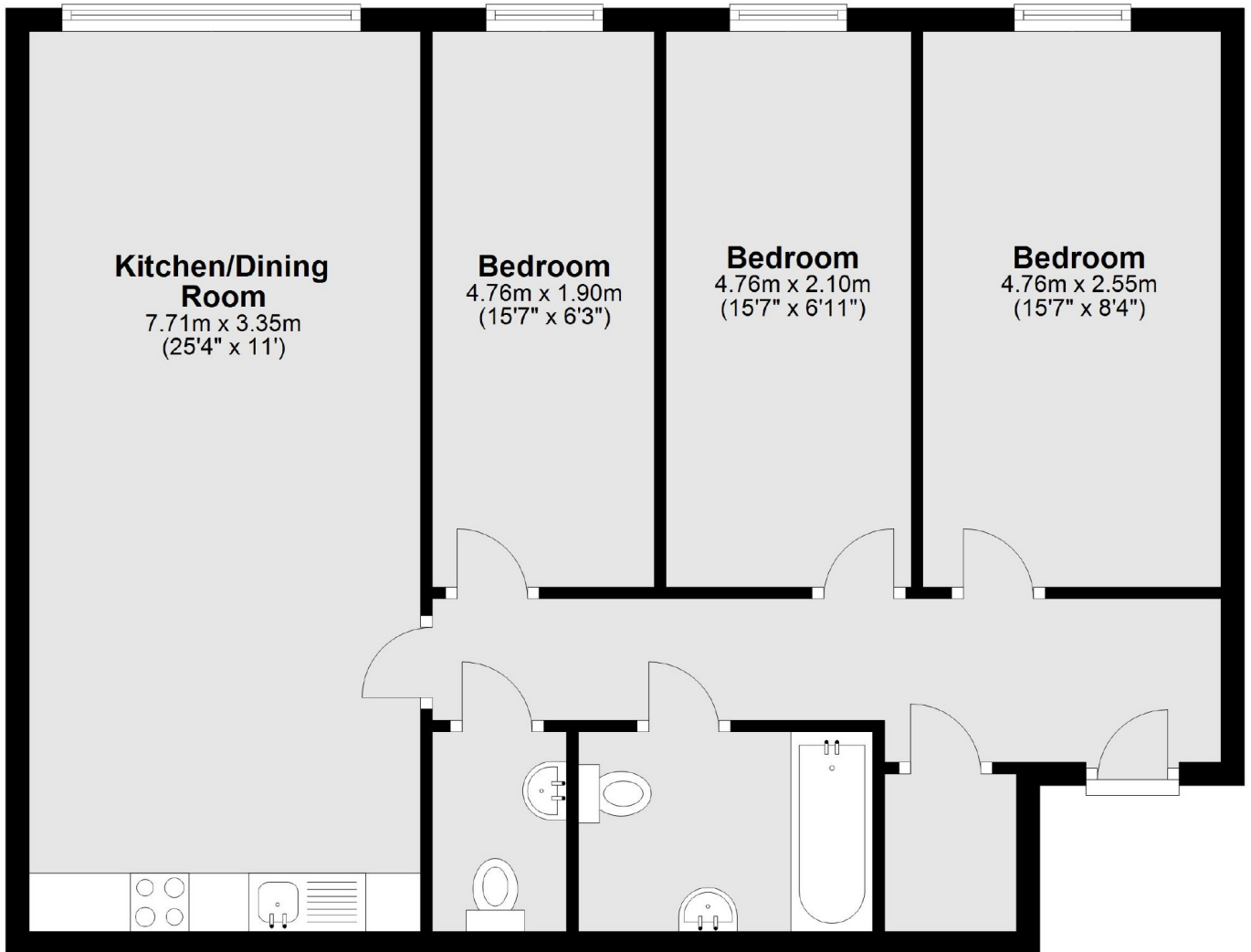
Situated in the heart of Colindale and just moments from Colindale Tube Station (Northern Line) as well as numerous eateries, shops and other local amenities. Gym facilities and other transport links are also close by.

Features

- Three Bedrooms
- Guest WC
- Underground Parking
- Lift Access
- Communal Gardens
- Leasehold

Boulevard Drive,
London, NW9

Fifth Floor



Total area: approx. 76.1 sq. metres (819.2 sq. feet)