

# ParaBar Estates



## Shire Close, Billericay

Asking Price £850,000

- DETACHED
- FIVE BEDROOMS
- GROUND FLOOR WC
- MAYFLOWER & BUTTSBURY CATCHMENT
- EXTENDED
- TWO BATHROOMS
- SOUTH WEST FACING GARDEN
- TWO RECEPTIONS
- SEPARATE UTILITY
- QUIET CUL DE SAC

106 High Street, Billericay, Essex, CM12 9BY  
01277 65 65 63

info@parabar.co.uk  
www.parabar.co.uk



# Shire Close, Billericay

\* DETACHED \* EXTENDED \* TWO RECEPTIONS \* FIVE BEDROOMS \* TWO BATHROOMS \* SEPARATE UTILITY \* GROUND FLOOR WC \* SOUTH WEST FACING GARDEN \* QUIET CUL DE SAC \* MAYFLOWER & BUTTSBURY CATCHMENT \* This attractive, spacious family home has been lovingly maintained & boasts five good size bedrooms, double length garage as well as a beautifully maintained secluded south west facing garden.



Council Tax Band: F



**PORCH**

**CLOAKROOM**

**LOUNGE**

19'10" x 12'2"

**DINING ROOM**

11'1" x 11'1"

**KITCHEN**

15'11" x 9'10"

**UTILITY**

5'10" x 6'10"

**GARAGE**

31'3" x 8'0"

**FIRST FLOOR**

**MASTER BEDROOM**

20'4" x 13'1"

**BEDROOM TWO**

12'11" x 11'4"

Access to ensuite

**ENSUITE**

6'6" x 5'6"

**BEDROOM THREE**

11'5" x 7'7"

**BEDROOM FOUR**

12'4" x 7'8"

**BEDROOM FIVE / STUDY**

8'8" x 6'11"

**BATHROOM**

9'3" x 5'2"

**EXTERIOR**

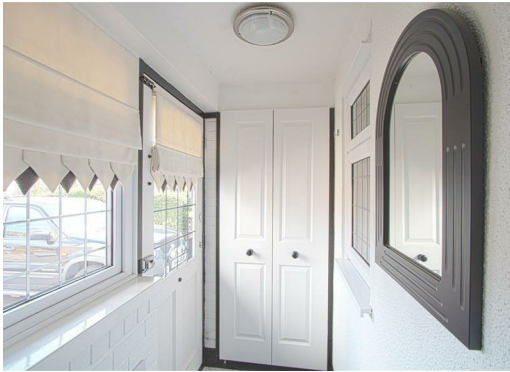
Front: driveway

Rear : patio area, lawn , shed.





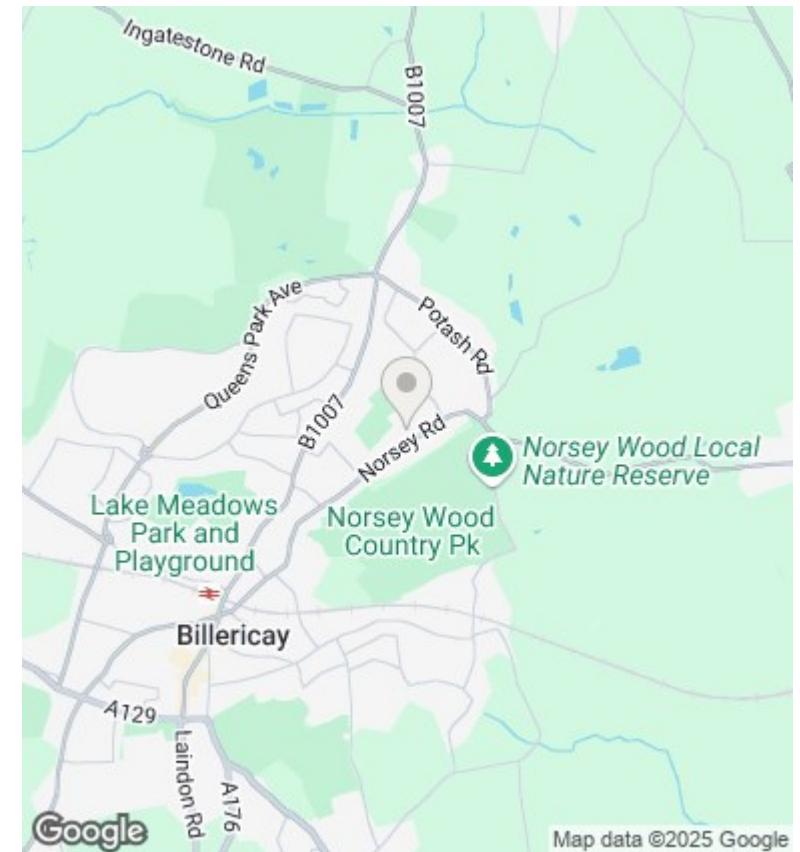






Total Area: 181.6 m² ... 1954 ft²

Whilst every effort has been made to ensure accuracy, measurements of doors, windows and other items are approximate and no responsibility is taken for any error, omission or mis statement. This plan is for illustrative purposes and so only be used as such.



## Directions

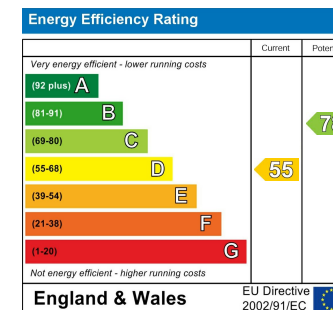
106 High Street, Billericay, Essex, CM12 9BY  
01277 65 65 63

## Viewings

Viewings by arrangement only. Call 01277 65 65 63 to make an appointment.

## Council Tax Band

F



info@parabar.co.uk  
www.parabar.co.uk