

# ParaBar Estates



## Dedham Close, Billericay

Asking Price £550,000

- THREE BEDROOMS
- MODERN INTEGRATED KITCHEN
- CLOAKROOM
- CUL DE SAC LOVCATION
- EXTENDED SEMI DETACHED
- ENSUITE TO MASTER
- AIR CON
- LARGE FAMILY ROOM
- SEPARATE DINING ROOM
- SOLAR PANELS

106 High Street, Billericay, Essex, CM12 9BY  
01277 65 65 63

info@parabar.co.uk  
www.parabar.co.uk



# Dedham Close, Billericay

\* THREE DOUBLE BEDROOMS \* EXTENDED SEMI DETACHED \* ENSUITE \* MODERN BATHROOM \* MODERN KITCHEN \* UTILITY AREA \* LARGE FAMILY ROOM \* GREAT SIZE LOUNGE \* PARKING AT FRONT \* Located in a Cul De Sac is this stunning three bedroom semi detached house which has been kept in excellent condition by the current owners. This home also has a separate dining room , Solar Panels, air conditioning units and a downstairs cloakroom.



Council Tax Band: D



## **ENTRANCE HALL**

## **LOUNGE**

16 x 12

## **DINER**

11'2 x 7'4

## **FAMILY ROOM**

17 x 10

## **KITCHEN**

20 x 8'7

## **UTILITY AREA**

7 x 5

## **CLOAKROOM**

## **FIRST FLOOR**

## **BEDROOM ONE**

11'8 x 9'4

## **ENSUITE**

8 x 5

## **BEDROOM TWO**

9'1 x 8'7

## **BEDROOM THREE**

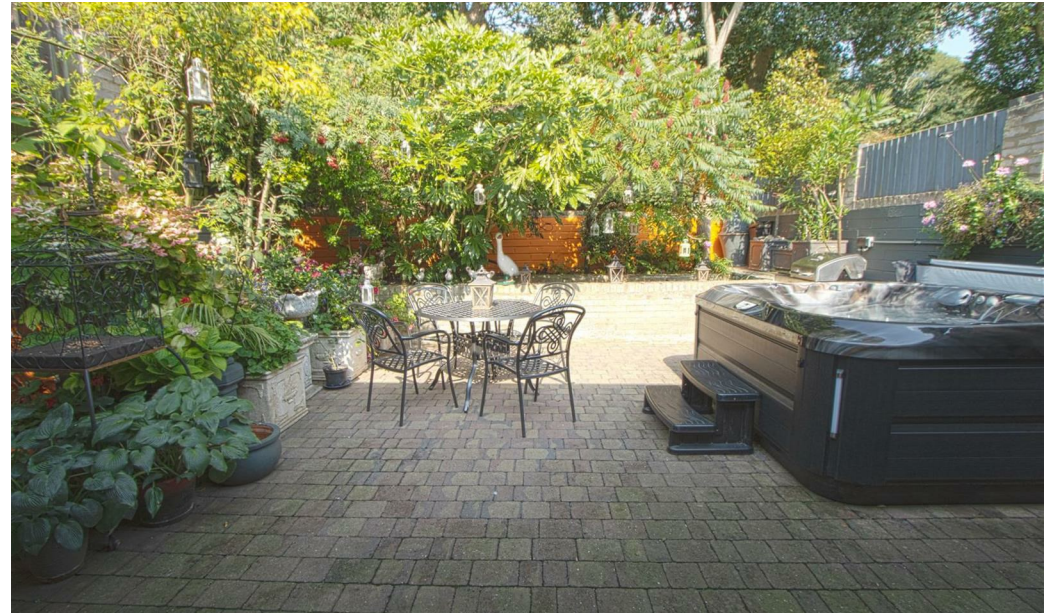
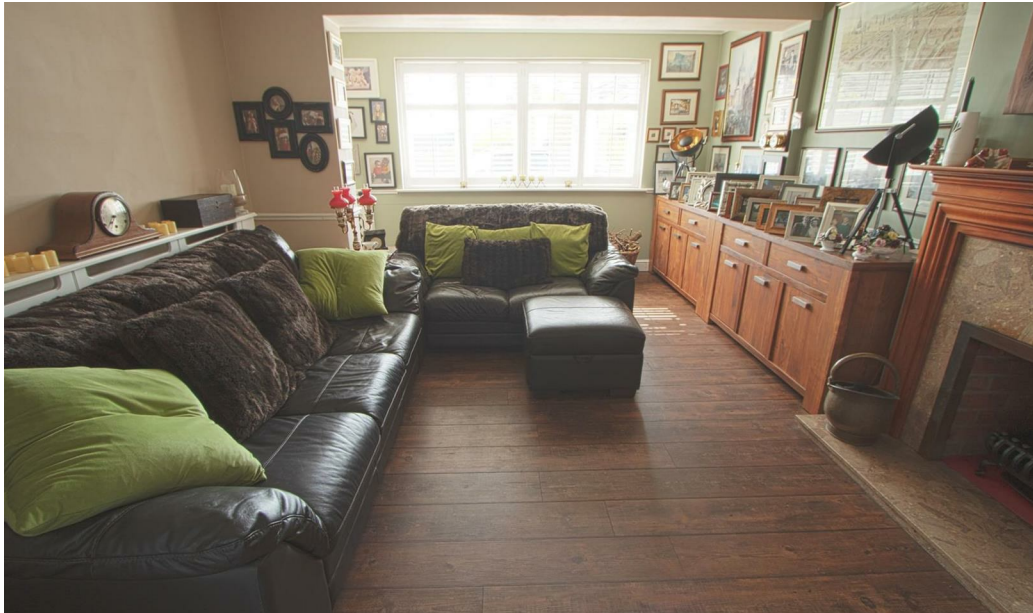
11'5 x 6'10

## **FAMILY BATHROOM**

8'2 x 6

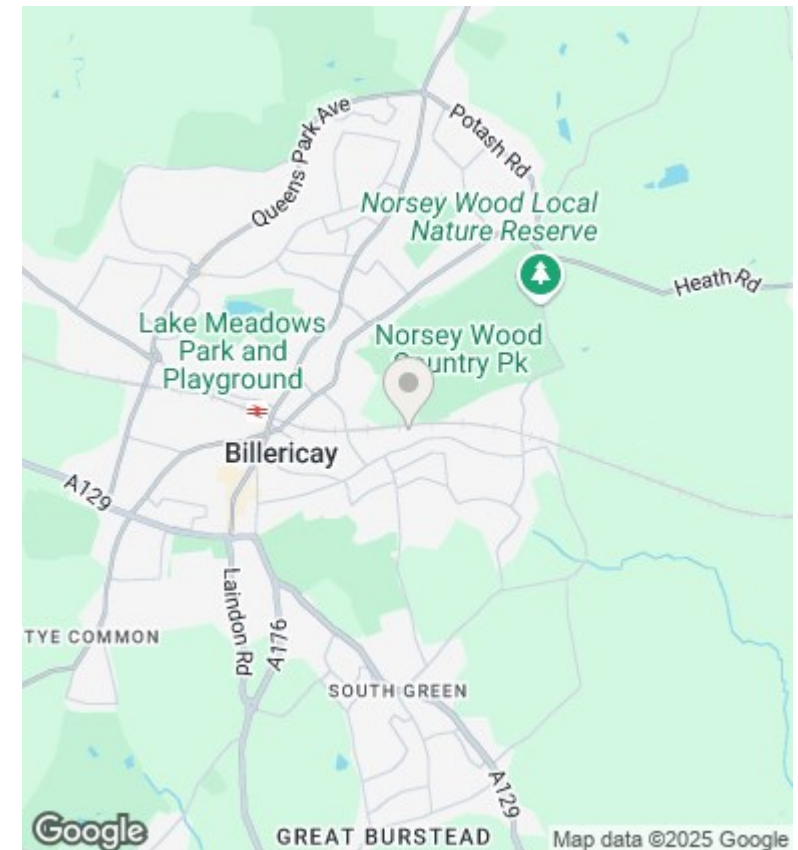
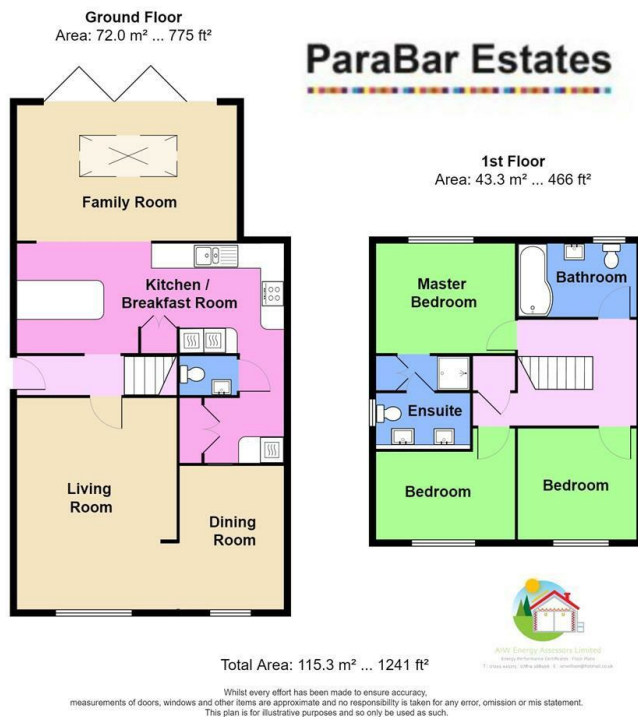
## **EXTERIOR**











## Directions

106 High Street, Billericay, Essex, CM12 9BY  
01277 65 65 63

## Viewings

Viewings by arrangement only. Call 01277 65 65 63 to make an appointment.

## Council Tax Band

D

| Energy Efficiency Rating                    |                         |           |
|---|-------------------------|-----------|
|   | Current                 | Potential |
| Very energy efficient - lower running costs |                         |           |
| (92 plus) <b>A</b>                          |                         |           |
| (81-91) <b>B</b>                            | 82                      | 84        |
| (69-80) <b>C</b>                            |                         |           |
| (55-68) <b>D</b>                            |                         |           |
| (39-54) <b>E</b>                            |                         |           |
| (21-38) <b>F</b>                            |                         |           |
| (1-20) <b>G</b>                             |                         |           |
| Not energy efficient - higher running costs |                         |           |
| <b>England &amp; Wales</b>                  | EU Directive 2002/91/EC |           |

info@parabar.co.uk  
www.parabar.co.uk