



Lavers Road Stoke Newington, London N16

NEXT MOVE
PROPERTY AGENTS

Lavers Road

Stoke Newington

London N16

Stunning five bedroom extended Victorian terraced house in a fantastic location close to Stoke Newington Church Street, Clissold Park and popular local schools.



DESCRIPTION

This thoroughly modern home is arranged over three floors and has been extensively refurbished, boasting a floor area of circa 1,950 sq ft. The accommodation on the ground floor comprises a generous open-plan double reception room with bay-window; and large kitchen-diner with smart fitted wall and floor units, work-island and quality integrated appliances. Doors open onto a charming secluded rear garden with paved patio and lawned area. In the basement there is a cellar ideal for storage. Moving up through the house on the split-level first floor there is a family bathroom with shower over the bath and three beautiful double bedrooms. The top floor features a stylish shower room and two further double bedrooms, one with twin-aspect windows.

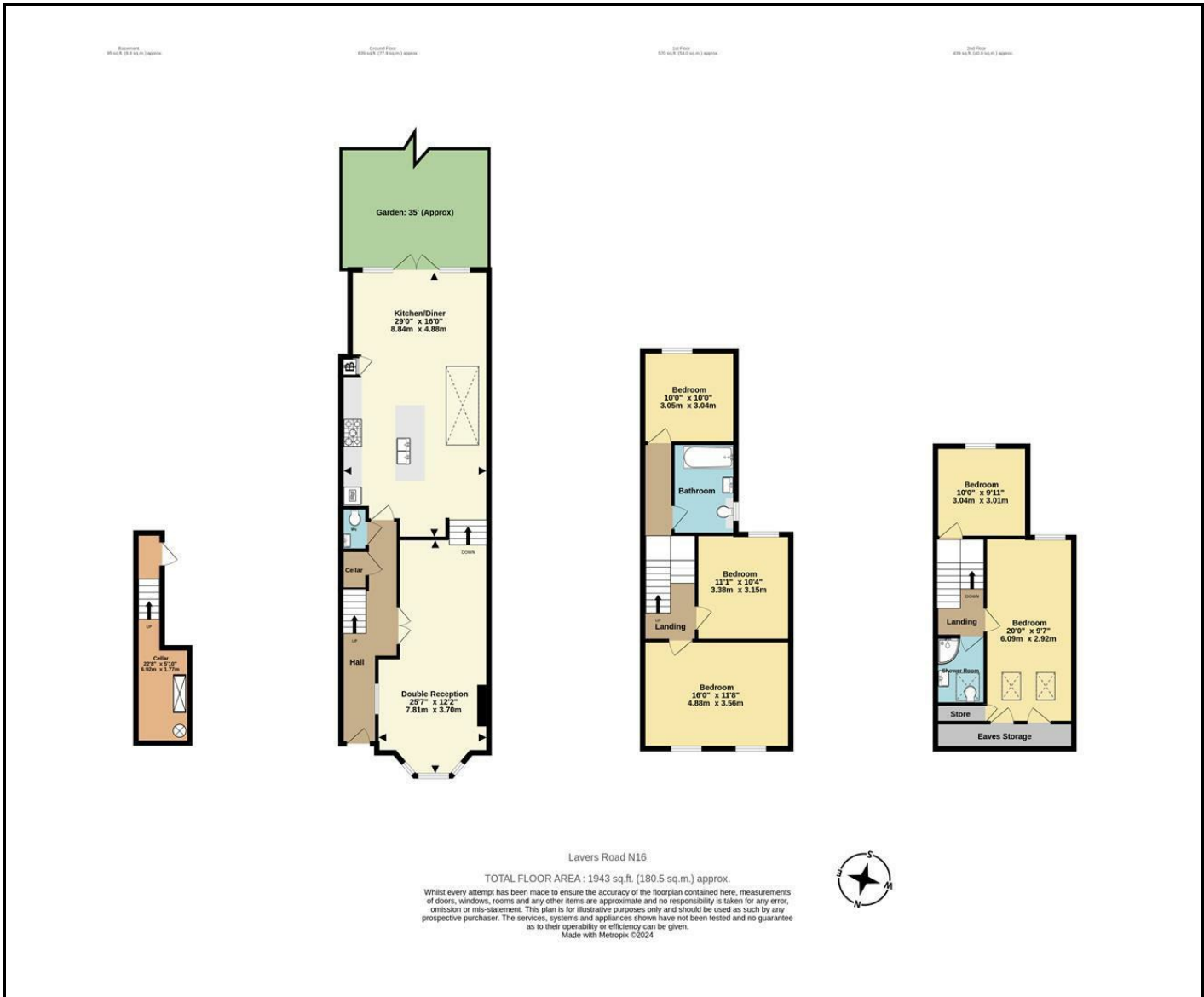
Lavers Road is situated directly moments from Church Street and The High Street's eclectic array of eateries, independent shops, pubs and coffee bars. There are excellent transport links to The City and West End with numerous good bus routes, and trains to Liverpool Street from nearby Stoke Newington Station (Overground).

Freehold

Asking Price £1,850,000







Energy Efficiency Rating		Current	Potential
Very energy efficient - lower running costs			
(92 plus)	A		
(81-91)	B		
(69-80)	C	73	82
(55-68)	D		
(39-54)	E		
(21-38)	F		
(1-20)	G		
Not energy efficient - higher running costs			
England & Wales		EU Directive 2002/91/EC	