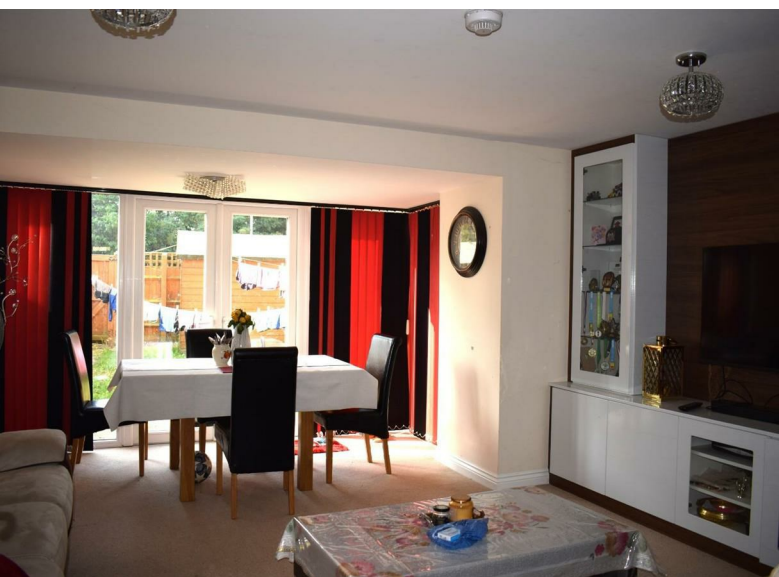


Under1Roof



**73 Hayton Way, Milton Keynes, MK4 4LD**  
**£1,895 Per Calendar Month**

# 73 Hayton Way, Milton Keynes, MK4 4LD

Under 1 Roof Are Pleased To Bring To The Market This Four Bedroom Town House Located on the New Development Of Tattenhoe Park. The Property In Brief Comprises of Four Bedrooms With The Master Benefitting From An En-suite & Built In Wardrobes. Bedrooms Two & Three Also Have built in Wardrobes. The Kitchen Comes With Integrated Dishwasher, Washing Machine & Fridge Freezer. The Lounge / Dining Room Has French Doors Leading To The Rear Garden. The Property Is Located on A Wide Road With Plenty Of Extra Parking Spaces.

Holding Deposit : Maximum one week's rent The Rent

Tenancy Deposit 5 or 6 weeks depending upon the rental amount

Late Rent Interest charged at 3% above Bank of England base rate when rent is more than 14 days late

## Hallway

Doors Leading To Lounge, Kitchen & Cloakroom. Stairs leading to First Floor Landing. Fitted carpets

## Lounge

17'8" x 14'11" (5.4 x 4.55)  
French Doors Leading To Rear Garden. Built in TV Unit. Fitted Carpets

## Kitchen

13'11" x 8'2" (4.26 x 2.50)  
Fitted With A Range Of Base & Eye Level Units With Roll Top Work Surfaces Under. Integrated Dishwasher, Washing Machine & Fridge Freezer. Electric Oven With GAs Hob Over. Windows To Front Aspect

## Cloakroom

Two Piece Suite In White Comprising Of Low Level WC & Hand Wash Basin

## Bedroom One

18'6" x 10'9" (5.66 x 3.3)  
Velux Window To Rear Aspect, Built In Wardrobes, Fitted Carpets, Door Leading To En-Suite

## En-Suite

8'6" x 6'0" (2.6 x 1.85)  
Three Piece Suite Comprising Of Low Level WC, Double Shower Cubicle & Hand Wash Basin. Storage unit

## Bedroom Two

13'11" x 8'8" (4.25 x 2.65)  
Window To Rear Aspect, Built In Wardrobe. Fitted Carpets

## Bedroom Three

10'10" x 7'0" (3.31 x 2.15)  
Window To Front Aspect, Built In Wardrobe. Fitted Carpets

## Bedroom Four

10'2" x 6'10" (3.1 x 2.1)  
Window to Rear Aspect. Fitted Carpets

## Bathroom

7'8" x 7'0" (2.35 x 2.15)  
Three Piece Suite In White Comprising Of Low Level WC, Hand Wash Basin & Double Shower Cubicle

## Rear Garden

Mainly Laid To Lawn With Patio Area & Garden Shed

## Directions

