



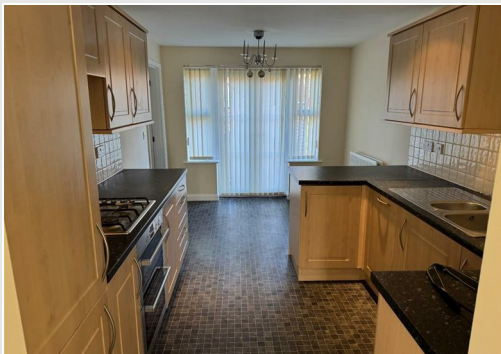
24 Faulkner Drive, MILTON KEYNES, MK3 6FB

£375,000



24 Faulkner Drive, MILTON KEYNES, MK3 6FB

£375,000



Kitchen / Dining Room

16'0" x 9'2" (4.9 x 2.8)

Utility Room

5'6" x 5'6" (1.7 x 1.7)

Cloakroom

Family Room

12'7" x 9'2" (3.85 x 2.8)

Lounge

15'1" x 12'1" (4.6 x 3.7)

Bedroom Two

15'1" x 8'10" (4.60 x 2.70)

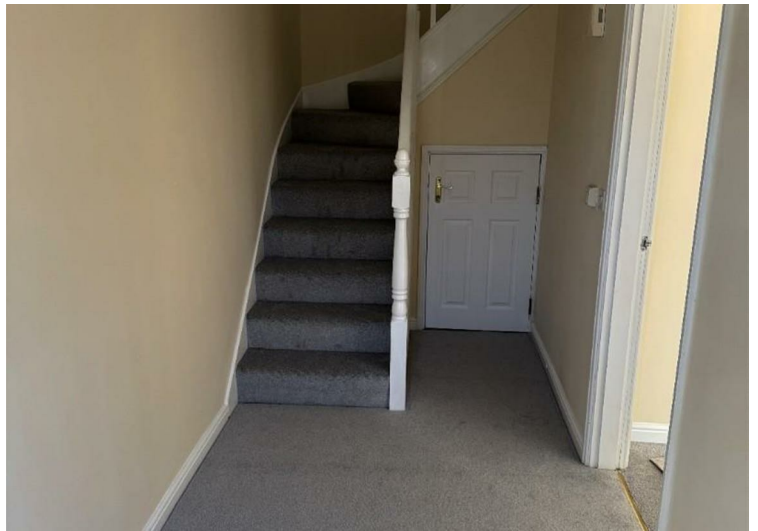
Master Bedroom

13'1" x 11'5" (4 x 3.50)

En-Suite

Bedroom Three

15'3" x 9'0" (4.65 x 2.75)





Energy Efficiency Rating		Environmental Impact (CO ₂) Rating			
	Current	Potential		Current	Potential
Very energy efficient - lower running costs					
(92 plus) A			Very environmentally friendly - lower CO ₂ emissions		
(81-91) B			(92 plus) A		
(69-80) C			(81-91) B		
(55-68) D			(69-80) C		
(39-54) E			(55-68) D		
(21-38) F			(39-54) E		
(1-20) G			(21-38) F		
Not energy efficient - higher running costs					
England & Wales			England & Wales		
EU Directive 2002/91/EC			EU Directive 2002/91/EC		

These particulars, whilst believed to be accurate are set out as a general outline only for guidance and do not constitute any part of an offer or contract. Intending purchasers should not rely on them as statements of representation of fact, but must satisfy themselves by inspection or otherwise as to their accuracy. No person in this firms employment has the authority to make or give any representation or warranty in respect of the property.