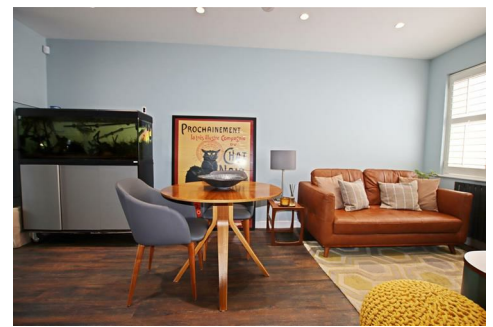




Simmons Estates

EST: 1996



Wordsworth Gardens, Borehamwood,

£639,950

- Three Bedroom Extended Townhouse
- Three reception Rooms
- Large Open Plan Kitchen/Living Area
- Air Conditioning & Fitted Wardrobes To Bedroom One
- Ev Charging Point & Off Street Parking
- Two Bathrooms (En Suite)
- Downstairs Toilet
- Landscaped Garden
- Alarm System, Hive Heating & CAT 5
- Modern Sought After Development Within Walking Distance To Station

This exquisite three-bedroom extended townhouse epitomises modern comfort and convenience. Boasting two bathrooms, including en suite facilities, and three reception rooms, this home offers ample space for versatile living arrangements. The addition of a downstairs toilet further enhances its practicality.

Upon entering, you're greeted by a spacious open-plan kitchen/living area, ideal for both daily living and entertaining guests. The kitchen is equipped with modern appliances and ample storage space, while the adjoining living area offers a comfortable retreat. Step outside to discover the meticulously landscaped garden, providing a serene retreat for relaxation or outdoor gatherings.

The property comprises three well-appointed bedrooms, including a master bedroom with en suite bathroom and fitted wardrobes. Additionally, a family bathroom and additional storage.

Equipped with air conditioning and fitted wardrobes in the master bedroom, this property ensures comfort and ample storage. For added security and connectivity, an alarm system, Hive heating, and CAT 5 wiring are installed.

Further benefits include an EV charging point and off-street parking, reflecting the property's commitment to modern living. Situated in a sought-after, contemporary development within walking distance to the station, residents enjoy easy access to transportation and local amenities.





These plans are intended to be used as a guide only. The actual dimensions of the property may vary slightly from those shown on the plans. The information is provided for general information only and should not be relied upon for any specific purpose. The information is provided for general information only and should not be relied upon for any specific purpose.

