



## **Flat 2 The Beeches, 1 Beech Drive, Borehamwood, Hertfordshire, WD6 4QU £535,000**

Flat Two, The Beeches is a stunning two-bedroom, one-bathroom ground floor apartment, which benefits from a private terrace with direct access to the communal gardens. This property has a stunning kitchen which overlooks the private terrace & rear garden.

Each residence is spacious and perfectly proportioned, with fantastic specification throughout, including Poggenpohl kitchens, gas underfloor heating, long leases and private outdoor space. The properties all come with Hans Grohe bathroom fittings, off-street parking, Siemens appliances and bi-folding doors which open to the patios & balconies.

Beech Drive is one of Borehamwood's most sought after roads, located close to Croxdale Road synagogue, a range of shops, London bus links and a short walk to Borehamwood high street.





Approximate Gross Internal Area = 75.2 sq m / 809 sq ft

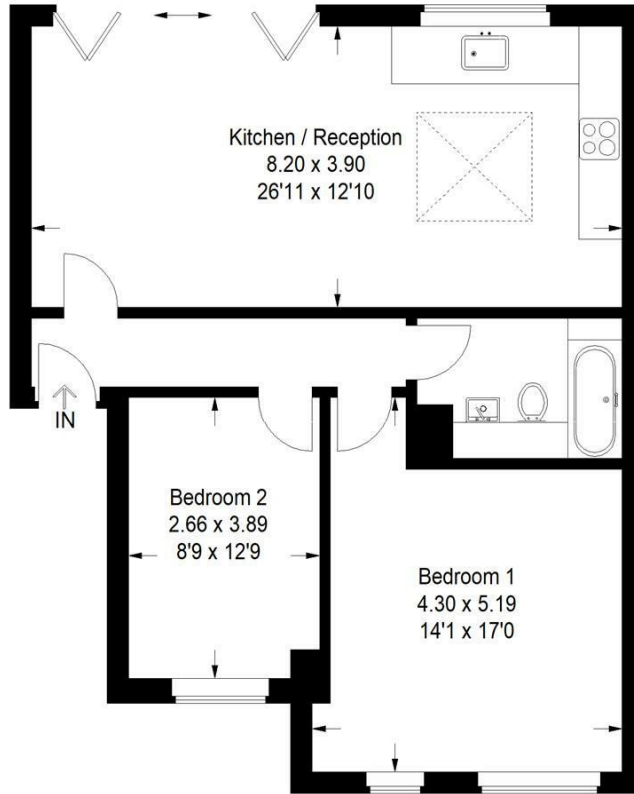


Illustration for identification purposes only, measurements are approximate, not to scale. (ID680108)

Energy Efficiency Rating		Current	Potential
Very energy efficient - lower running costs			
(92 plus) <b>A</b>			
(81-91) <b>B</b>			
(69-80) <b>C</b>		80	80
(55-68) <b>D</b>			
(39-54) <b>E</b>			
(21-38) <b>F</b>			
(1-20) <b>G</b>			
Not energy efficient - higher running costs			
England & Wales		EU Directive 2002/91/EC	