



Simmons Estates

EST: 1996



Boreham Holt, Elstree,

£1,600 PCM

- Large apartment
- Very good condition
- Close to station
- Great location
- Permit Parking
- Two double bedrooms
- Ground floor
- 2 minute walk to town
- Large living room

This spacious Two Double Bedroom GROUND FLOOR APARTMENT situated within this sought-after purpose-built development. The property benefits from an great size Living/Dining Room, a fitted Kitchen, Bathroom, an Entry Phone System and well maintained landscaped communal Gardens.

Boreham Holt is conveniently located within walking distance to Borehamwood High Street offering a wide range of local shops and amenities. Transportation Links include Elstree & Borehamwood Train Station and convenient bus links.



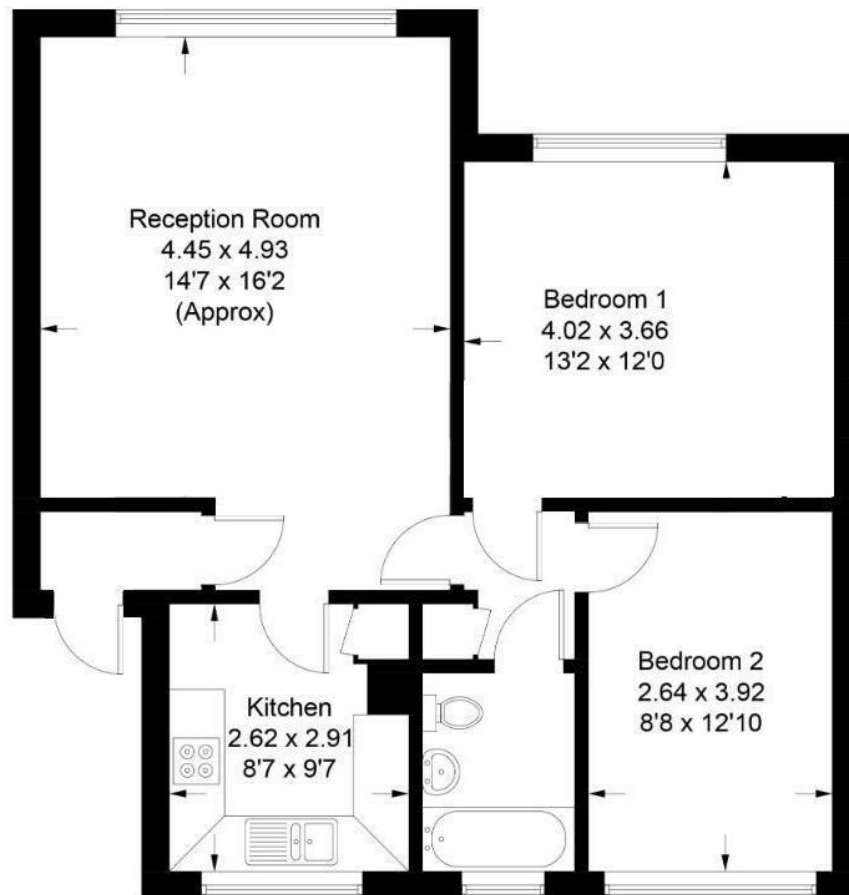


Illustration for identification purposes only, measurements are approximate, not to scale.

