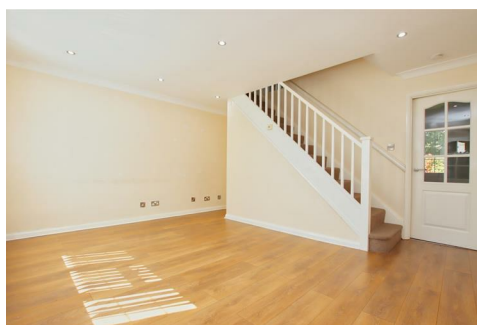




Simmons Estates

EST: 1996



Buchanan Court, Borehamwood,

Asking Price £495,000

- Three Bedrooms
- Two Reception Rooms
- Good Condition Throughout
- Off Street Parking
- Chain Free
- End Of Terrace House
- Fully Tiled Family Bathroom
- Private Garden With Side Access
- Quiet Cul de Sac

This well-proportioned three-bedroom End Of Terrace house is located in a quiet cul-de-sac within the highly desirable Studio Way development. Offering almost 900 square feet of living space, this chain-free property has been thoughtfully extended, including a garage conversion that now provides an additional reception room, making it perfect for family living.

As you enter the property, you're greeted by a welcoming porch that leads into a well-appointed reception room, which flows seamlessly into the kitchen/diner. From here, you have access to the garden, perfect for outdoor living. Additionally, there is another versatile reception room, ideal for use as a dining room or playroom.

Upstairs, the property boasts three spacious bedrooms, each offering ample storage. The family bathroom is thoughtfully designed, making it a functional and comfortable space for all the family.

Externally, the property offers off-street parking, ensuring convenience for residents and guests alike.

Situated in a prime location, this home is within easy reach of local amenities, including shops, schools, and bus routes. It's also just a short distance from central Borehamwood, which offers excellent schools such as Cowley Hill School and Hertsmere Academy, as well as a variety of shops and restaurants. The new Sky Studios, located nearby, further enhance the appeal of this area, making it a highly attractive location for families. Transport links are superb, with easy access to the A1, M25, and Thameslink station, providing swift routes to both London and the north.

