



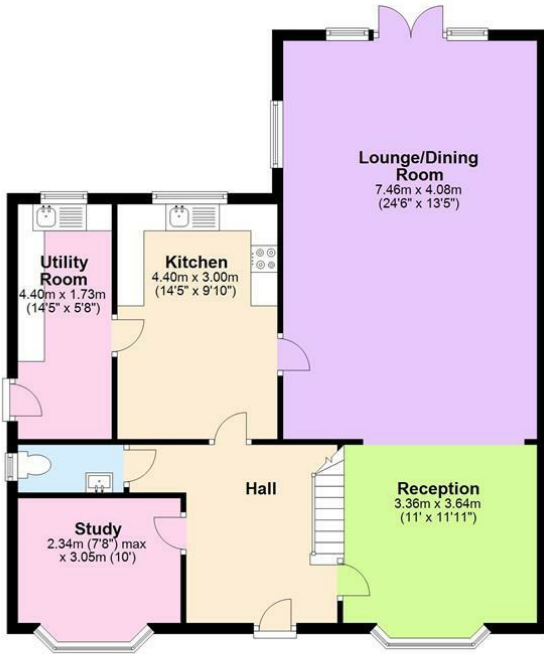
4 Belmor, Elstree, Herts WD6 3JX

This spacious four-bedroom detached family home, offering 2008 sqft of versatile living space, is situated in a prime location in Elstree. Nestled in a quiet and peaceful cul-de-sac, this property provides the perfect blend of privacy and convenience, with easy access to local amenities, schools, and transport links.

The ground floor features a fully fitted kitchen with a separate utility room, ideal for laundry and additional storage. The large living room/diner is perfect for family gatherings, while the separate sitting area offers a comfortable space to relax. There is also an additional reception room, which can be used as a study or playroom. A convenient W/C is located on this floor, adding practicality and ease.



Ground Floor
Approx. 110.6 sq. metres (1190.5 sq. feet)



167 Sq Mts
without
Garage

Total area: approx. 186.6 sq. metres (2008.9 sq. feet)

The measurements given are approximate and are for illustration only. They should not be relied on for valuation.
Plan produced using PlanUp.

First Floor
Approx. 76.0 sq. metres (818.4 sq. feet)

