



Simmons Estates

EST: 1996



Hillside Avenue, Borehamwood,

£625,000

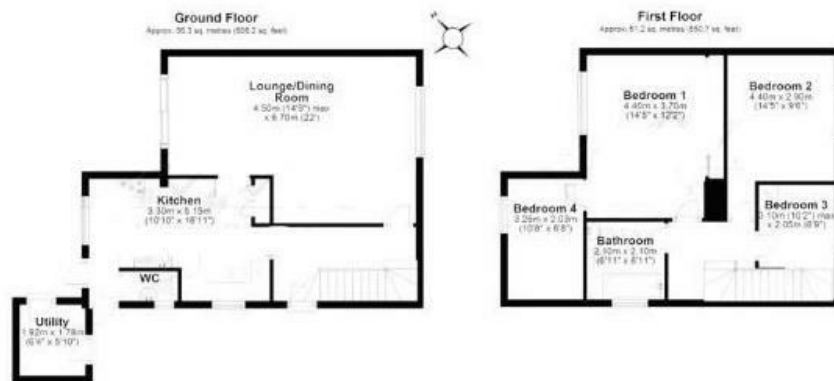
- Four Bedrooms
- Good Condition Throughout
- Large Lounge/Diner
- South Side Of Borehamwood
- Two Parking Spaces To The Rear Of The Property
- Semi Detached House
- Utility Room
- Downstairs Toilet
- Opposite Yavneh & Monksmead Schools
- 10-Minute Walk to Town & Station

This charming Three-bedroom semi-detached property, offering nearly 1,200 sqft of living space, is perfectly situated on the South Side of Borehamwood, directly opposite Yavneh School, making it an ideal choice for families. The home boasts a spacious open-plan living and dining area with attractive laminate flooring, creating a welcoming and airy atmosphere. The living area seamlessly flows into a modern kitchen, ideal for culinary enthusiasts, with ample counter space and modern fixtures. Downstairs also includes a convenient W.C., enhancing the functionality of the space.

On the first floor, you'll find a well-sized family bathroom and three generously proportioned bedrooms, including two doubles and two singles. One of the single bedrooms is conveniently located off the master bedroom, offering flexibility for use as a nursery, office, or playroom. The bedrooms are light and airy, with plenty of space.

Additional highlights of the property include two designated parking spaces at the rear, offering ease and convenience, as well as an outhouse with a utility room for extra storage and functionality. The home is ideally located for easy access to local amenities, including Elstree & Borehamwood Station, making commuting a breeze. The property also benefits from its close proximity to various local shops, parks, and excellent schools, adding to its appeal for families.





Total area: approx. 107.5 sq. metres (1151.9 sq. feet)
 Floor plan measurements are approximate and are for illustrative purposes only.
 Plan produced using PlotUp.

