



Simmons Estates

EST: 1996



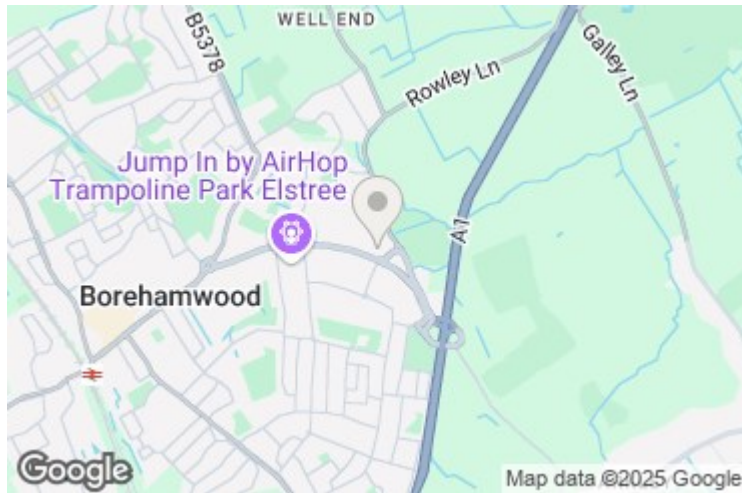
Elstree House, Borehamwood,

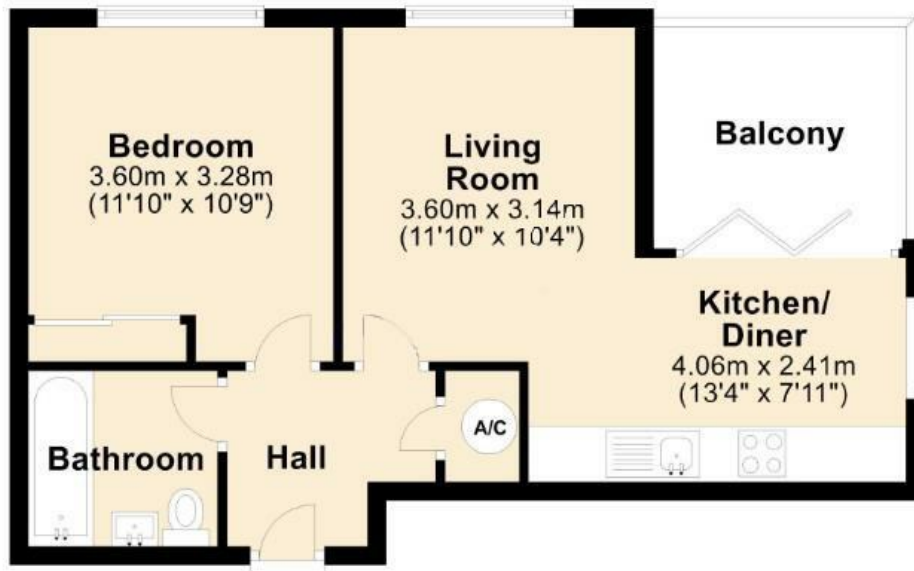
£270,000

- Large One Bedroom Apartment
- Allocated Parking in Secured Car Park
- Great Size Open Plan Kitchen/Living Room
- First Floor with Lift Access
- Great Buy to Let Investment
- Great Size Balcony with Bi-Folding Doors
- Use of The Residents Gym & Concierge
- Very Bright & Airy Apartment
- Modern Fully Tiled Bathroom
- Chain Free

An immaculately presented one double bedroom first floor apartment. This luxury apartment has fitted wardrobes, a fully tiled bathroom, allocated parking, gym and concierge service. Further outdoor space via the balcony from the bi-folding doors.

The property further benefits from engineered oak flooring, double glazing throughout, oak doors and secure entry- video phone system, plus access to the on-site private gym and concierge. Externally are the communal grounds and secure parking for 1 car plus visitor spaces for guests.





Total area: approx. 41.5 sq. metres (446.5 sq. feet)
For illustration purposes only - not to scale

