



Simmons Estates

EST: 1996



Stanborough Avenue, Borehamwood,

£460,000

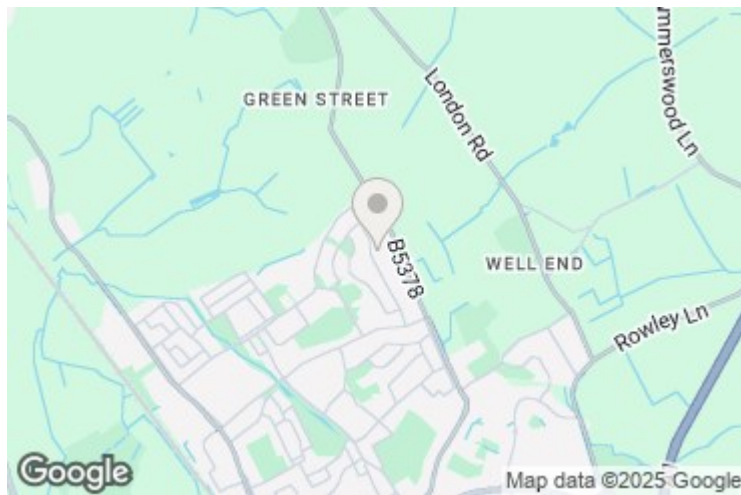
- Four Double Bedrooms
- Good Condition Throughout
- Fitted Wardrobes
- Potential To Extend (STPP)
- Chain Free
- Larger Kitchen/Diner
- Ample Storage
- Front & Rear Garden
- Short Walk To Local Schools, Shops & Bus Routes

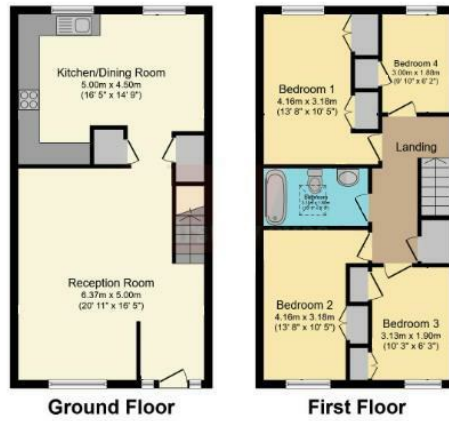
This beautifully presented four-bedroom end of terrace family home is in good condition throughout and offers excellent living space with the potential to extend (STPP). The property features a large kitchen/diner, spacious reception room, and ample storage, including fitted wardrobes in the bedrooms.

Externally, there are well-maintained front and rear gardens, partly laid to lawn with shrub and flower borders. The large shed provides versatile space for storage, an office, or a gym.

The property is offered chain-free and is ideally located just a short walk from local schools, shops, and bus routes, making it perfect for family living.

Located on Stanborough Avenue, the home also benefits from excellent transport links to Borehamwood High Street, Elstree, and Borehamwood Station, ensuring convenient access to local amenities and transport options.





Total floor area 104.5 m² (1,124 sq.ft.) approx

This floor plan is for illustrative purposes only. It is not drawn to scale. Any measurements, floor areas (including any total floor area), openings and orientation are approximate. No details are guaranteed, they cannot be relied upon for any purpose and they do not form part of any agreement. No liability is taken for any error, omission or misstatement. A party must rely upon its own inspection(s). Powered by www.focalagent.com

