



Simmons Estates

EST: 1996



Boreham Holt, Elstree,

£345,000

- Two Double Bedrooms
- Large Living/Dining Room
- Walking Distance To Elstree & Borehamwood Station
- Ground Floor Apartment
- Seperate Kitchen
- Long Lease

This spacious Two Double Bedroom GROUND FLOOR APARTMENT situated within this sought-after purpose-built development. The property benefits from an great size Living/Dining Room, a fitted Kitchen, Bathroom, an Entry Phone System and well maintained landscaped communal Gardens.

Boreham Holt is conveniently located within walking distance to Borehamwood High Street offering a wide range of local shops and amenities. Transportation Links include Elstree & Borehamwood Train Station and convenient bus links.

Please note: This property is owned by an associate of Simmons Estates.



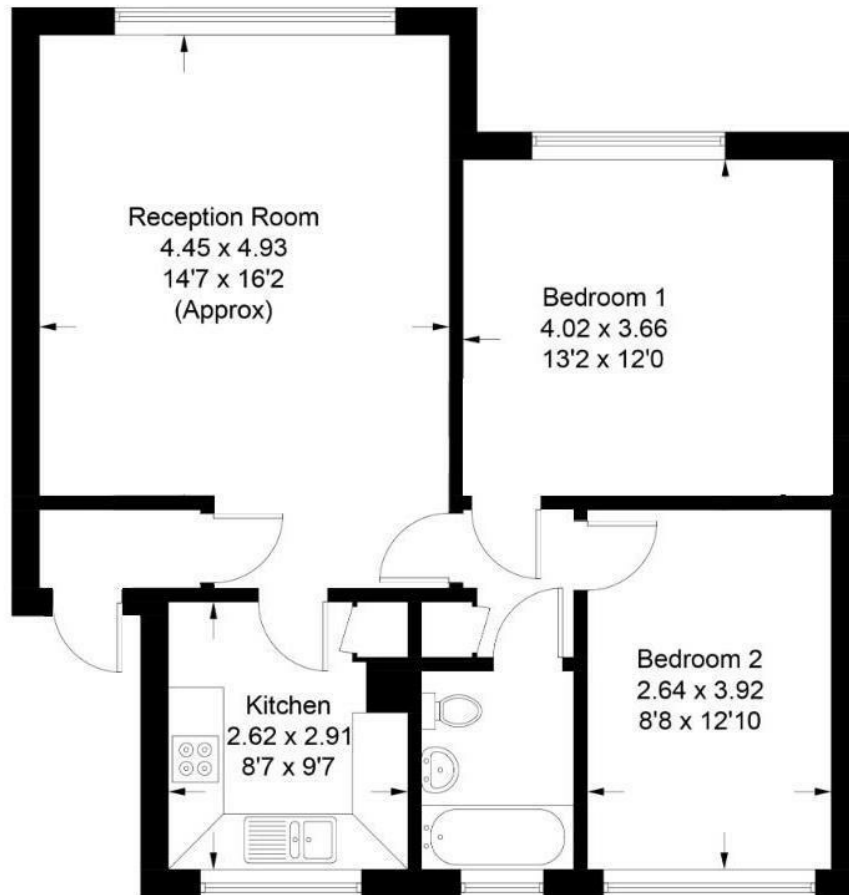


Illustration for identification purposes only, measurements are approximate, not to scale.

