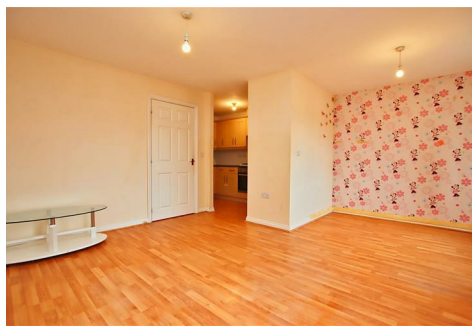




Simmons Estates

EST: 1996



Sommerville Court, Borehamwood,

£300,000

- Two Double Bedrooms
- Good Size Living Room
- Allocated Parking
- Close To Shops & Bus Links
- Gas Central Heating
- First Floor Apartment
- Fitted Wardrobes
- Small Modern Block
- Ample Storage

A two-bedroom first-floor flat situated in a modern development, providing convenient access to the town center, Thameslink mainline station, and local amenities. The property offers spacious bedrooms, a large living area, and a separate kitchen. Additional features include allocated off-street parking and visitor bays. With secure entry and well-maintained communal gardens, this flat is both attractive and desirable.

Please note: This property is owned by an associate of Simmons Estates.

