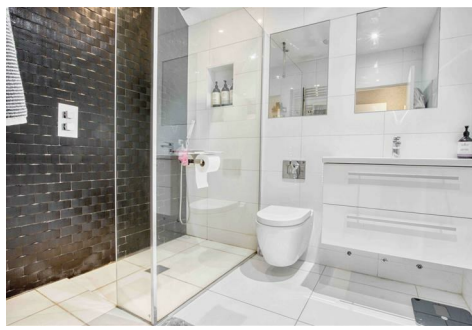




Simmons Estates

EST: 1996



Ashley Drive, Borehamwood,

£832,500

- Four Bedroom Semi- Detached House
- Two Bath/Shower Rooms
- Beautifully Presented Throughout
- Study/Play Room
- Downstairs Toilet
- Three Versatile Reception Rooms
- Spacious Open-Plan Kitchen/Breakfast Room
- South Side Of Borehamwood
- Kitchen Featuring An Island With A Breakfast Bar
- Off Street Parking For Multiple Cars

This generously sized four-bedroom home is ideally located on the south side of Borehamwood. The property features a thoughtfully designed layout, including a spacious kitchen-family room, three well-appointed double bedrooms, and a comfortable fourth bedroom. With two modern bath/shower rooms and three versatile reception rooms, there's plenty of space for family living and entertaining.

A standout feature is the expansive kitchen, which includes a breakfast bar/island and bifold doors that open onto the garden. This home is perfect for families seeking space, comfort, and convenience in a desirable location.

Situated on a peaceful residential road, the home is just moments from London bus links, ensuring excellent connectivity. Inside, the property is in excellent condition, offering a bright and airy family area, a flexible study/playroom, and a welcoming living room. Additionally, it's a convenient 15-minute walk to the town center and station.

