



Simmons Estates

EST: 1996



Holt Close, ,

£317,500

- Two Double Bedrooms
- Large Living/Dining Room
- 733Sqft
- Walking Distance To Elstree & Borehamwood Station
- Garage
- Ground Floor Apartment
- Seperate Kitchen
- Fitted Wardrobes
- Long Lease
- Chain Free

This well maintained and spacious Two Double Bedroom Ground FLOOR APARTMENT situated within this sought-after purpose-built development. The property benefits from an great size Living/Dining Room, a Fitted Kitchen, a partly Tiled Bathroom, fitted wardrobes, an Entry Phone System, a garage and well maintained communal Gardens.

Holt Close is conveniently located within walking distance to Borehamwood High Street offering a wide range of local shops and amenities. Transportation Links include Elstree & Borehamwood Train Station and convenient bus links.



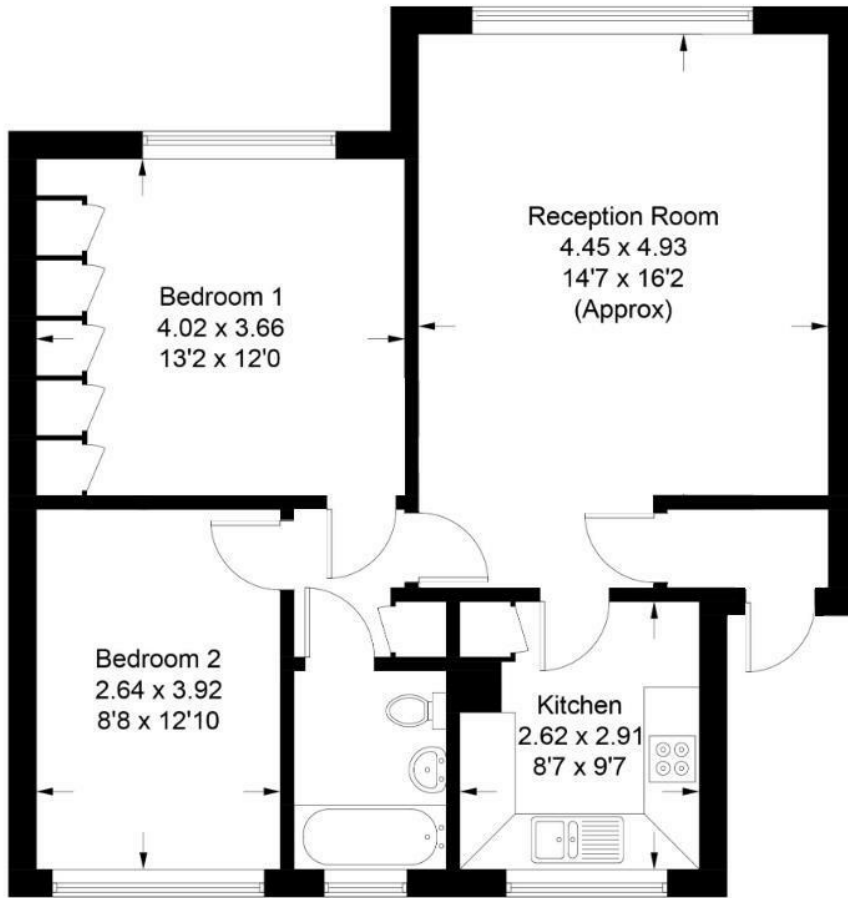


Illustration for identification purposes only, measurements are approximate, not to scale.

Energy Efficiency Rating		Current	Potential
Very energy efficient - lower running costs			
(92 plus) A			
(81-91) B			
(69-80) C			
(55-68) D			
(39-54) E			
(21-38) F			
(1-20) G			
Not energy efficient - higher running costs			
63		74	
England & Wales	EU Directive 2002/91/EC		

Environmental Impact (CO ₂) Rating		Current	Potential
Very environmentally friendly - lower CO ₂ emissions			
(92 plus) A			
(81-91) B			
(69-80) C			
(55-68) D			
(39-54) E			
(21-38) F			
(1-20) G			
Not environmentally friendly - higher CO ₂ emissions			
England & Wales	EU Directive 2002/91/EC		