



Simmons Estates

EST: 1996



Abbots Place, Borehamwood,

£499,950

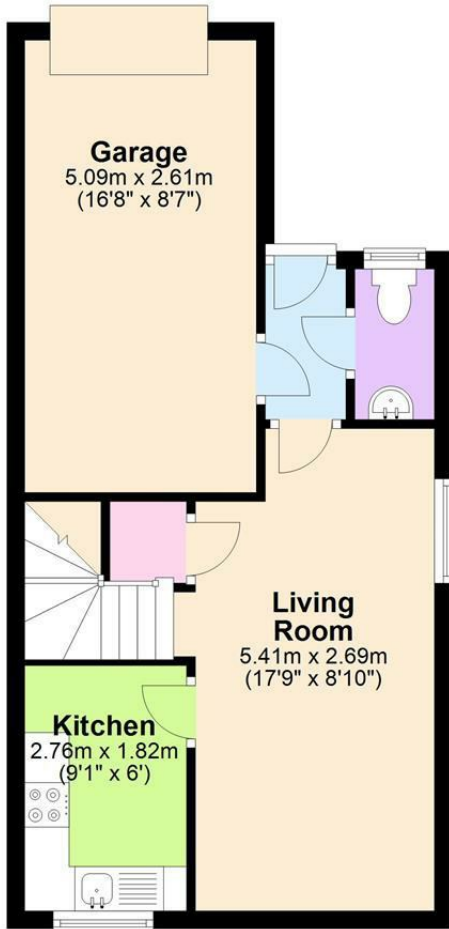
- Two Double Bedrooms
- Separate Kitchen
- Living Room/Dining Room
- Downstairs WC
- Off Street Parking
- Semi Detached House
- En Suite To Master Bedroom
- South Facing Garden
- Integral Garage
- Chain Free

This two-bedroom, two-bathroom semi-detached house is located in a private close on the outskirts of Borehamwood. The property features a spacious dining/family room and a separate kitchen. The master bedroom is impressive and includes an en suite shower room. Additionally, there is a guest cloakroom for added convenience. The home offers ample storage throughout and boasts a well-maintained south-facing rear garden with a large patio area. The property also includes a single garage and off-street parking. The combination of indoor and outdoor spaces makes this home ideal for comfortable living and entertaining. OFFERED CHAIN FREE



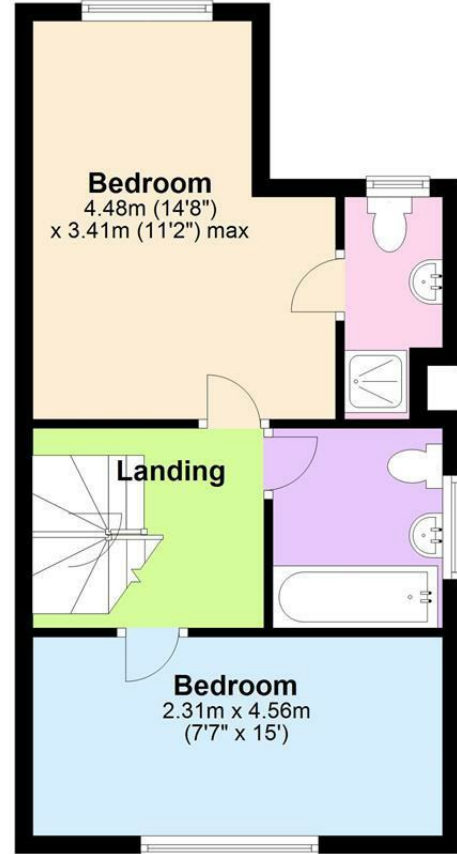
Ground Floor

Approx. 42.4 sq. metres (456.9 sq. feet)



First Floor

Approx. 37.7 sq. metres (406.2 sq. feet)



Total area: approx. 80.2 sq. metres (863.1 sq. feet)

The measurements given are approximate and are for illustration only. They should not be relied on for valuation. Plan produced using PlanUp.

