

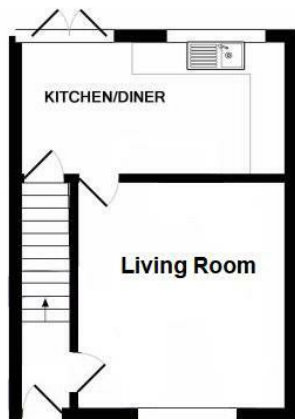




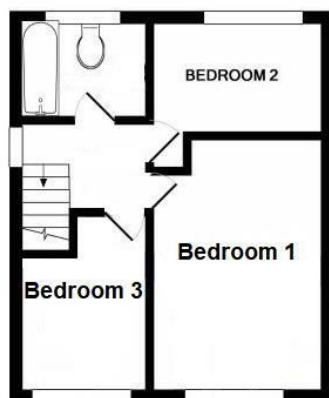
## 4 Reston Path, Borehamwood, Hertfordshire WD6 5AU

Discover the potential of this three-bedroom mid terrace house on Reston Path. Featuring a large kitchen/breakfast room, front and rear gardens, and a garage to the rear, this property is perfect for those looking to create their dream home. While it requires modernisation throughout, it offers a fantastic opportunity for renovation. Additional benefits include ample space for a growing family and the convenience of being chain-free.





GROUND FLOOR



1ST FLOOR

