



Simmons Estates

EST: 1996



Darwin House, Borehamwood,

£377,000

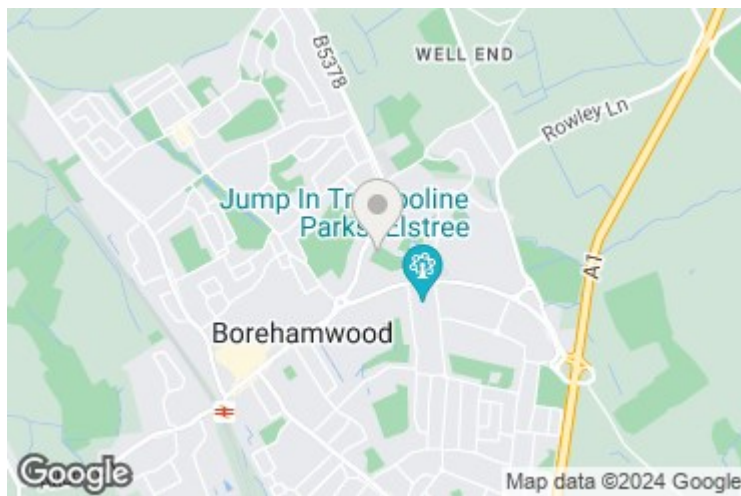
- Two Double Bedrooms
- Ground Floor Apartment
- Fitted Wardrobes & Ample Storage
- Allocated Parking & Visitors Bays
- Open Plan Kitchen & Lounge
- Two Bathrooms (En Suite)
- Private Balcony
- Immaculately Presented Throughout
- Long Lease
- 5 Years Old Private Development

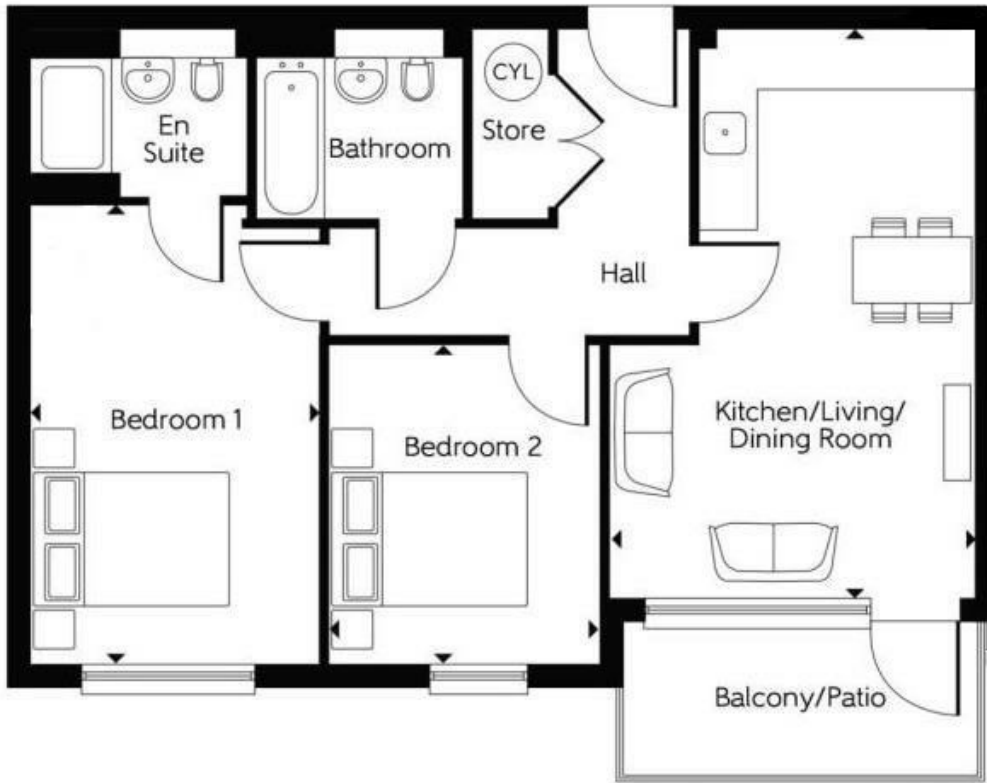
Discover modern living at its finest in this immaculately presented ground floor apartment, located in a prestigious private development just 5 years old. This elegant residence offers two spacious double bedrooms and en suite bathroom.

Step inside to find an open-plan kitchen and lounge area, perfectly designed for contemporary living. The kitchen is fully equipped with high-quality appliances and ample storage, seamlessly flowing into the bright and airy living space. Large windows and glass doors lead out to your private balcony.

Both bedrooms feature fitted wardrobes, offering generous storage space.. The entire apartment is immaculately presented, reflecting the care and attention to detail that has gone into maintaining this stunning home.

Additional features include allocated parking, visitor bays, and a long lease, ensuring peace of mind and convenience for years to come.





Energy Efficiency Rating		Current	Potential
<i>Very energy efficient - lower running costs</i>			
(92 plus) A			
(81-91) B			
(69-80) C			
(55-68) D			
(39-54) E			
(21-38) F			
(1-20) G			
<i>Not energy efficient - higher running costs</i>			
England & Wales		77	77
	EU Directive 2002/91/EC		

Environmental Impact (CO ₂) Rating		Current	Potential
<i>Very environmentally friendly - lower CO₂ emissions</i>			
(92 plus) A			
(81-91) B			
(69-80) C			
(55-68) D			
(39-54) E			
(21-38) F			
(1-20) G			
<i>Not environmentally friendly - higher CO₂ emissions</i>			
England & Wales			
	EU Directive 2002/91/EC		