



Simmons Estates

EST: 1996

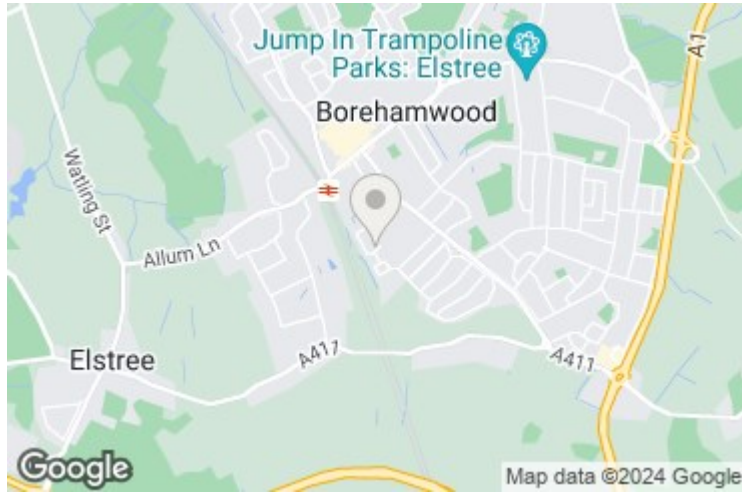


Coleridge Way, Borehamwood,

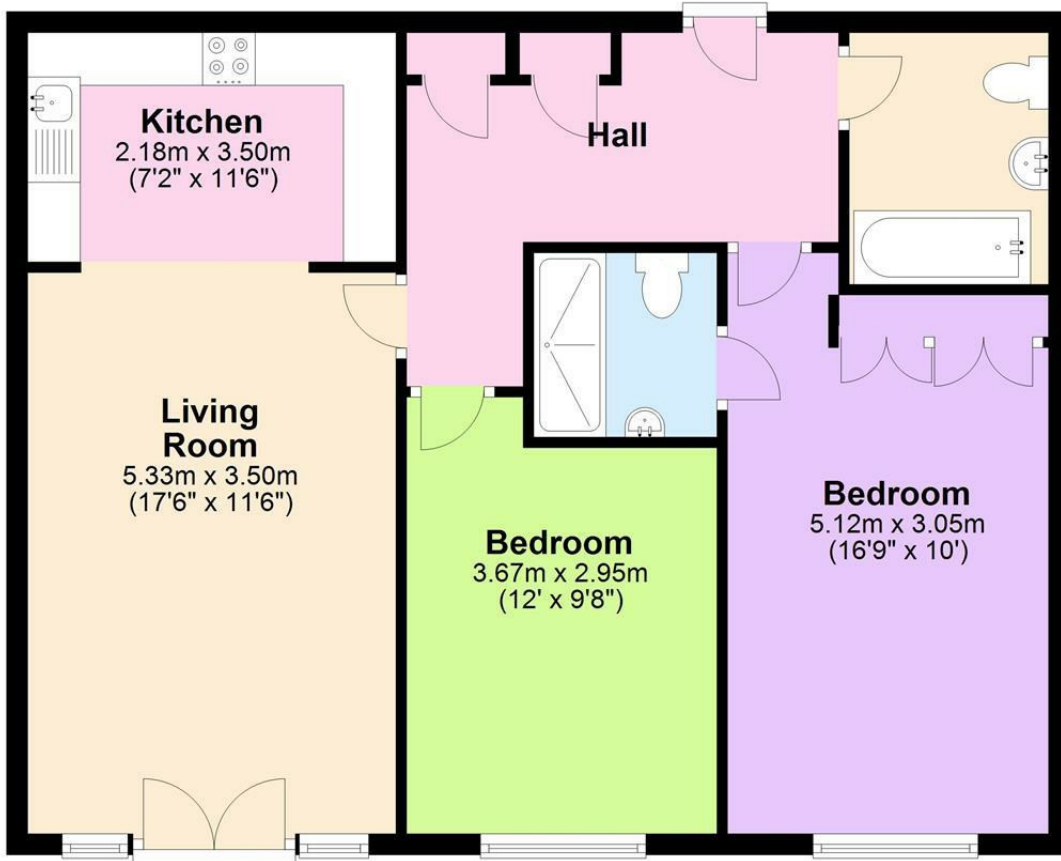
£389,950

- Two Double Bedrooms
- Underground Parking
- Fitted Wardrobes
- Close to Town & Station
- Long Lease
- Two Bath (En Suite)
- Large Living Room
- French Doors Overlooking Gardens
- Good Condition
- Chain Free

Presenting a spacious first-floor apartment boasting two double bedrooms, conveniently located just a 2-minute walk from the town and station. This property features a generous lounge, two bath/shower rooms, ample storage, fitted wardrobes, and underground parking. In good condition throughout, it is situated in a highly sought-after area on the south side of Borehamwood, within walking distance of several primary schools, Yavneh College, and Borehamwood high street.



Approx. 73.7 sq. metres (793.1 sq. feet)



Total area: approx. 73.7 sq. metres (793.1 sq. feet)

The measurements given are approximate and are for illustration only. They should not be relied on for valuation.

Plan produced using PlanUp.

Energy Efficiency Rating		Current	Potential
Very energy efficient - lower running costs			
(92 plus) A			
(81-91) B			
(69-80) C			
(55-68) D			
(39-54) E			
(21-38) F			
(1-20) G			
Not energy efficient - higher running costs			
England & Wales		78	80
EU Directive 2002/91/EC			

Environmental Impact (CO ₂) Rating		Current	Potential
Very environmentally friendly - lower CO ₂ emissions			
(92 plus) A			
(81-91) B			
(69-80) C			
(55-68) D			
(39-54) E			
(21-38) F			
(1-20) G			
Not environmentally friendly - higher CO ₂ emissions			
England & Wales			
EU Directive 2002/91/EC			