



Simmons Estates

EST: 1996



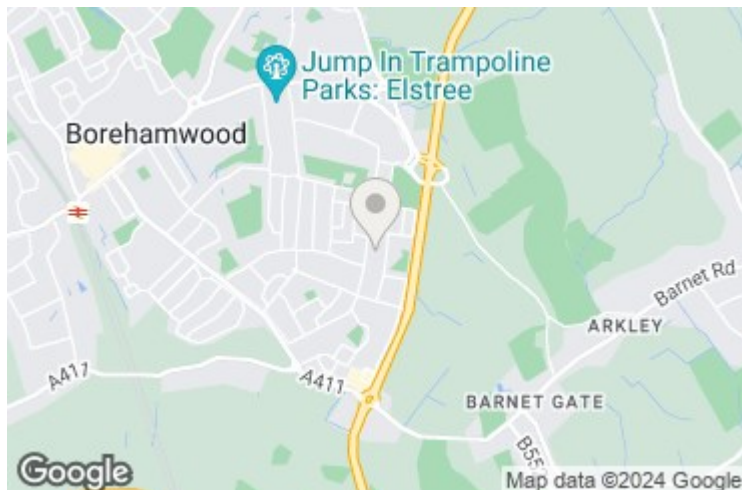
Knebworth Path, Borehamwood,

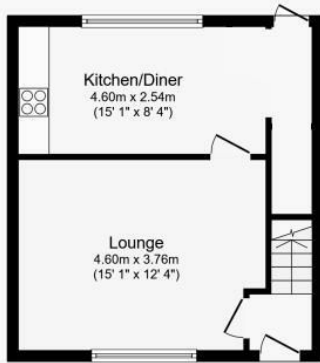
£465,000

- Three Bedrooms
- Beautifully Presented Throughout
- Fitted Wardrobes To All Bedrooms
- Quiet Cul-De-Sac
- Off Street Parking
- End Of Terrace
- Large Kitchen/Diner
- South Side Of Borehamwood
- Side Access

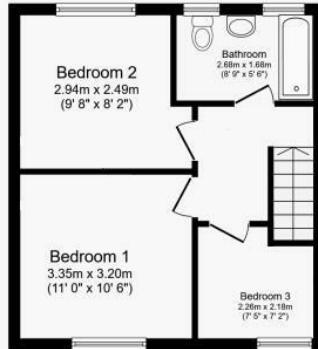
Step into this inviting three-bedroom end-of-terrace home, beautifully presented throughout. The spacious kitchen/diner serves as the heart of the home, ideal for family gatherings and entertaining guests. Each bedroom boasts fitted wardrobes, providing ample storage space and enhancing the home's functionality. A generously sized and well-maintained family bathroom adds to the home's appeal.

Situated on the south side of Borehamwood, you can enjoy the tranquility of a quiet cul-de-sac while still having easy access to local amenities. With side access and off-street parking, convenience is right at your doorstep. Experience the perfect blend of comfort, functionality, and serenity in this charming Borehamwood residence.





Ground Floor



First Floor

