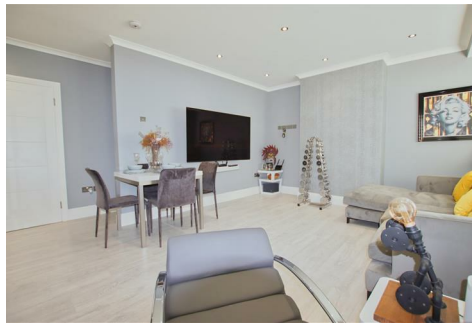




Simmons Estates

EST: 1996



Eldon Avenue, Borehamwood,

£355,000

- Two Double Bedrooms
- Luxury kitchen
- Newly Decorated Throughout
- Great Location
- First Floor Maisonette
- Fully Tiled Bathroom
- Immaculate Condition
- Private Garden

Nestled in a sought-after locale, this exquisite first-floor maisonette offers a harmonious blend of comfort, style, and convenience. Boasting two generous double bedrooms, this residence presents an ideal sanctuary for modern living.

The heart of the home is the luxurious kitchen, where culinary aspirations come to life amidst sleek countertops, state-of-the-art appliances, and ample storage space.

Adjacent, a fully tiled bathroom awaits, providing a haven of relaxation with its pristine finishes and modern fixtures.

Perfectly positioned, this property enjoys the convenience of a great location, offering easy access to local amenities, transportation links, and recreational facilities.

Completing the allure of this remarkable abode is the private garden, providing a tranquil retreat where outdoor gatherings and moments of serenity unfold effortlessly.



Approximate Gross Internal Area = 53.1 sq m / 572 sq ft
 Outbuilding = 47 sq m / 506 sq ft
 Total = 100.1 sq m / 1078 sq ft

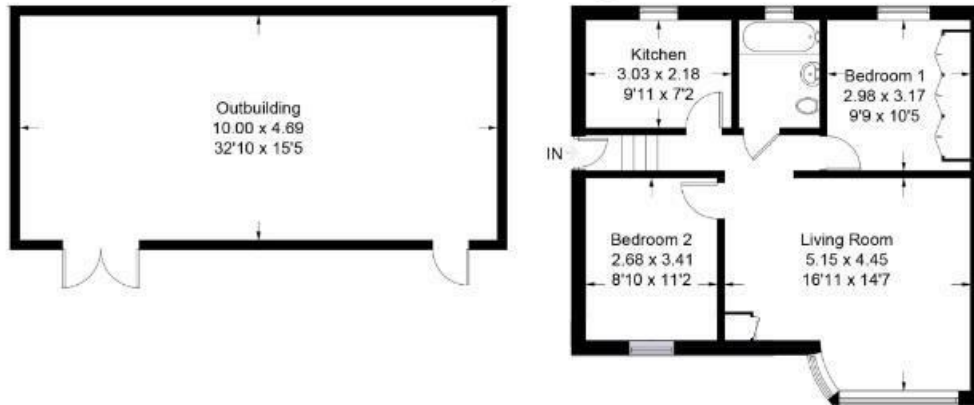


Illustration for identification purposes only, measurements are approximate, not to scale. Winkworth © 2023 (ID977149)

