



Simmons Estates

EST: 1996

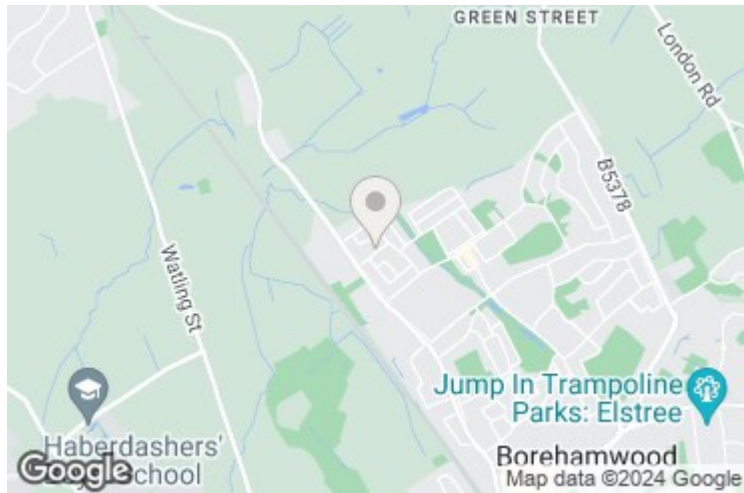


Wetherby Road, Borehamwood,

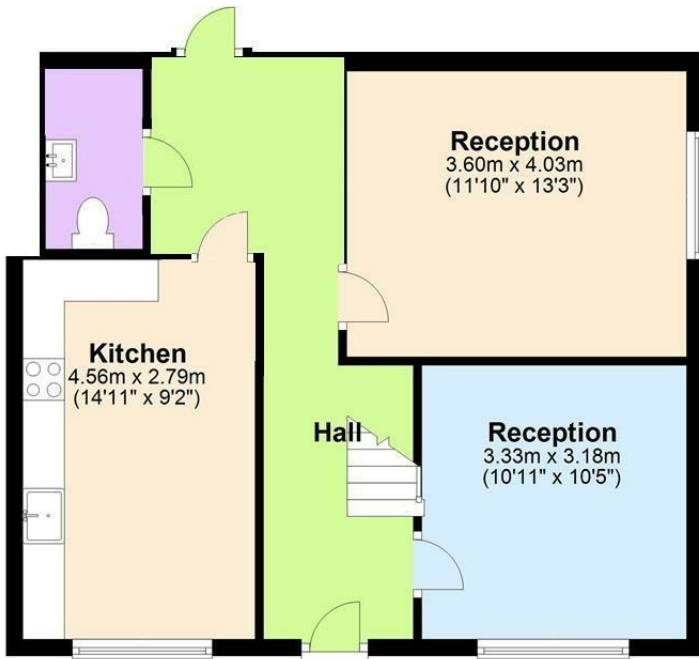
£549,950

- Four Bedroom 'T' House
- Kitchen/Diner
- Front & Rear Garden
- Potential to Extend (subject to planning)
- Two Reception Rooms
- Downstairs Toilet
- Off Street Parking
- Large Corner Plot

Presenting a spacious 4-bedroom house featuring a sizable kitchen/diner and a convenient downstairs toilet. This property boasts a generous living room, a separate TV/Family Room, and a family bathroom, alongside both front and rear gardens. Positioned in proximity to London bus links, various shops, and local schools, it offers convenient access to amenities. Offered for sale chain-free, it presents the opportunity for extension (subject to planning permission) and enjoys the advantage of occupying a large corner plot. Furthermore, parking is available on the driveway for two cars.



Ground Floor



First Floor



Total area: approx. 104.7 sq. metres (1126.8 sq. feet)

The measurements given are approximate and are for illustration only. They should not be relied on for valuation. Plan produced using PlanUp.

