



Simmons Estates

EST: 1996

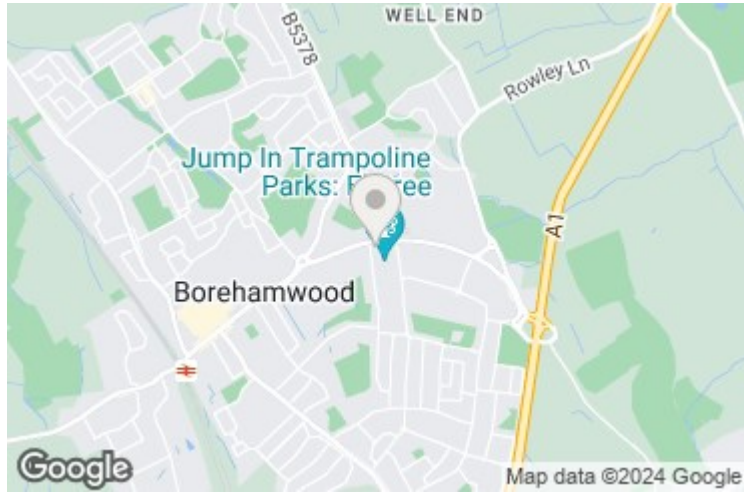


Gemini Park, Borehamwood,

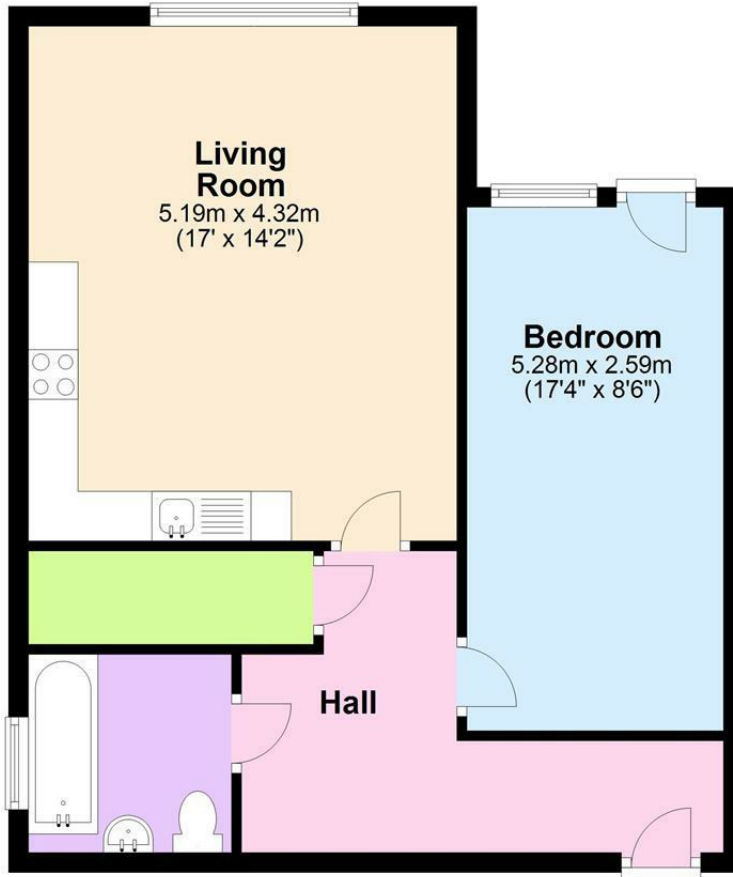
£275,000

- One Double Bedroom
- Good Size Living Room
- 5-Minute Walk to Town Centre
- Fantastic Location
- Chain Free
- Private Balcony
- Allocated Parking
- 2-Minute Walk to Gym & Swimming Pool
- Ample Storage

Presented in impeccable condition, this one double bedroom apartment is located within a contemporary development, only a 5-minute stroll from the town center. Boasting a spacious hallway, modern bathroom, ample storage facilities, and a generously sized living room/kitchen area, it offers both comfort and functionality. Additionally, the property features allocated parking and a private balcony, enhancing its appeal and providing desirable amenities.



Approx. 54.2 sq. metres (583.1 sq. feet)



Total area: approx. 54.2 sq. metres (583.1 sq. feet)

The measurements given are approximate and are for illustration only. They should not be relied on for valuation. Plan produced using PlanUp.

Energy Efficiency Rating		Current	Potential
Very energy efficient - lower running costs			
(92 plus) A			
(81-91) B			
(69-80) C			
(55-68) D			
(39-54) E			
(21-38) F			
(1-20) G			
Not energy efficient - higher running costs			
England & Wales		84	88
EU Directive 2002/91/EC			

Environmental Impact (CO ₂) Rating		Current	Potential
Very environmentally friendly - lower CO ₂ emissions			
(92 plus) A			
(81-91) B			
(69-80) C			
(55-68) D			
(39-54) E			
(21-38) F			
(1-20) G			
Not environmentally friendly - higher CO ₂ emissions			
England & Wales			
EU Directive 2002/91/EC			