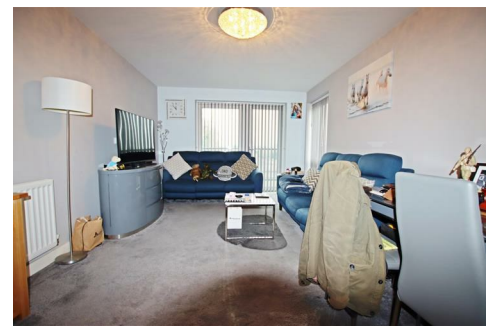




# Simmons Estates

EST: 1996

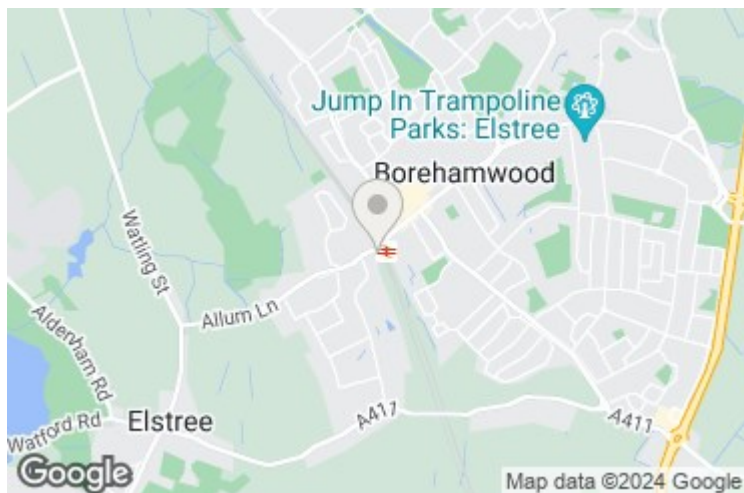


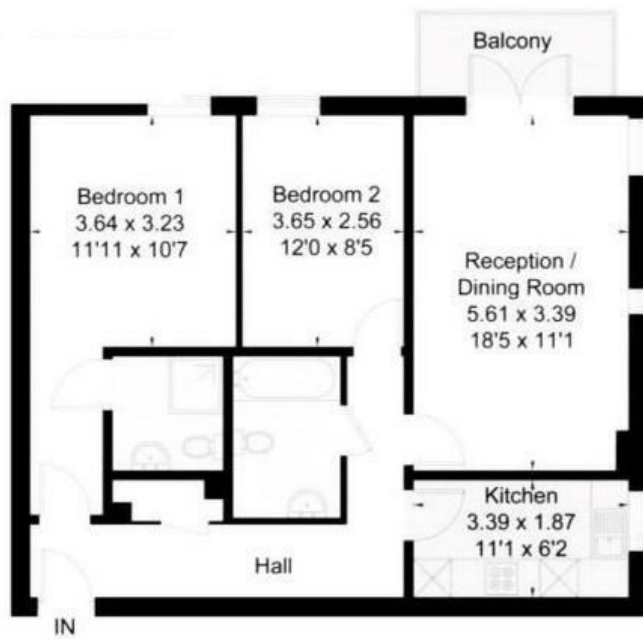
## Owen Court, Elstree,

**£335,000**

- Two Double Bedrooms
- Second Floor Apartment
- Large Living Room
- Lift Access
- Good Condition Throughout
- Two Bathrooms (En Suite)
- Seprate Kitchen
- Balcony
- Private Secured Parking
- Moments Walk To Station

A two double bedroom apartment that is situated a 1-minute walk from town & station, offered in fantastic condition, with a long lease, two bath/shower rooms, a fantastic size lounge that opens on to a private balcony, large entrance hallway and modern fittings throughout. Situated in this extremely popular close beside the sought after Deacons Hill Road, the property is in an exclusive development just a stone's throw from Elstree & Borehamwood station.





Energy Efficiency Rating		Current	Potential
Very energy efficient - lower running costs			
(92 plus) <b>A</b>			
(81-91) <b>B</b>			
(69-80) <b>C</b>			
(55-68) <b>D</b>			
(39-54) <b>E</b>			
(21-38) <b>F</b>			
(1-20) <b>G</b>			
Not energy efficient - higher running costs			
<b>England &amp; Wales</b>		83	83
	EU Directive 2002/91/EC		

Environmental Impact (CO <sub>2</sub> ) Rating		Current	Potential
Very environmentally friendly - lower CO <sub>2</sub> emissions			
(92 plus) <b>A</b>			
(81-91) <b>B</b>			
(69-80) <b>C</b>			
(55-68) <b>D</b>			
(39-54) <b>E</b>			
(21-38) <b>F</b>			
(1-20) <b>G</b>			
Not environmentally friendly - higher CO <sub>2</sub> emissions			
<b>England &amp; Wales</b>			
	EU Directive 2002/91/EC		