



# Simmons Estates

EST: 1996

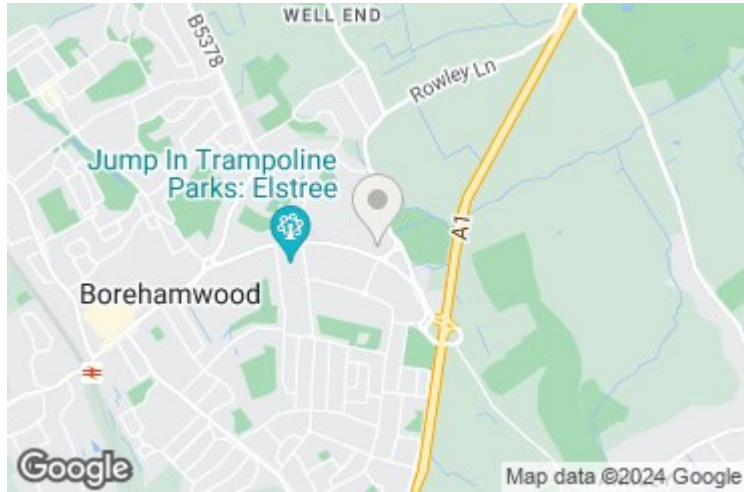


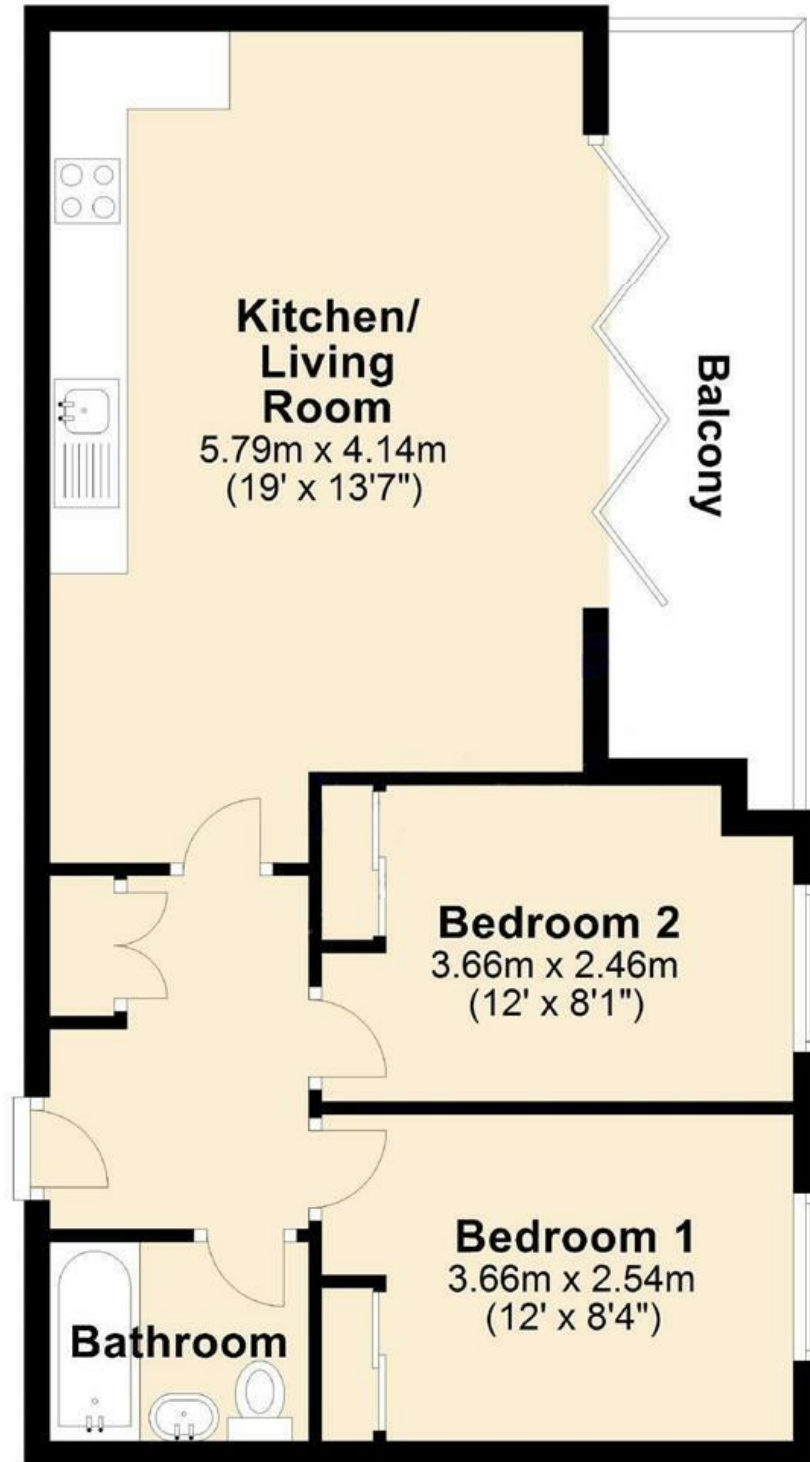
## **Elstree House, Borehamwood,**

**£325,000**

- Two Double Bedroom
- Open Plan Living
- Allocated Parking in Secured Car Park
- Great Size Balcony with Bi-Folding Doors
- Easy Access To A1/A41/M1
- Second Floor Apartment
- Lift Access
- Use of The Residents Gym & Concierge
- Fully Tiled Bathroom
- Chain Free

A Two double bedroom Second floor apartment offers a very modern fitted high spec kitchen diner with built in appliances and granite worktops. Open plan to a spacious lounge area which leads onto a good size balcony. There are two double bedrooms and a modern bathroom suite with Porcelain tiling. You also have a Concierge service,(which is ideal for collecting parcels etc), video entry system, allocated parking, CCTV Cameras. There is also use of a Gym within the grounds.





Total area: approx. 53.2 sq. metres (572.7 sq. feet)  
For illustration purposes only - not to scale

