



OAKFIELD

Devonshire Place, Eastbourne, BN21 4AF

Asking Price £220,000



Devonshire Place, Eastbourne, BN21 4AF

A spacious lower ground floor flat situated within a convenient location within walking distance to Eastbourne town centre and approximately a few hundred yards from the seafront

The property is well presented throughout and would make a lovely home. Comprising of two double bedrooms, a large living space opened out by the large bay window, a comfortably sized kitchen, family bathroom and separate shower room.

The property boasts its original features with a feature fireplace and original coving.

Parking is available on street with a residents permit which you can obtain from the council.





Living Room

19'9" x 14'7" (6.00 x 4.50)

Kitchen

8'3" x 7'6" (2.50 x 2.30)

Master Bedroom

13'8" x 11'8" (4.20 x 3.60)

Bedroom Two

9'4" x 8'3" (2.80 x 2.50)

Bathroom

7'2" x 6'0" (2.20 x 1.80)

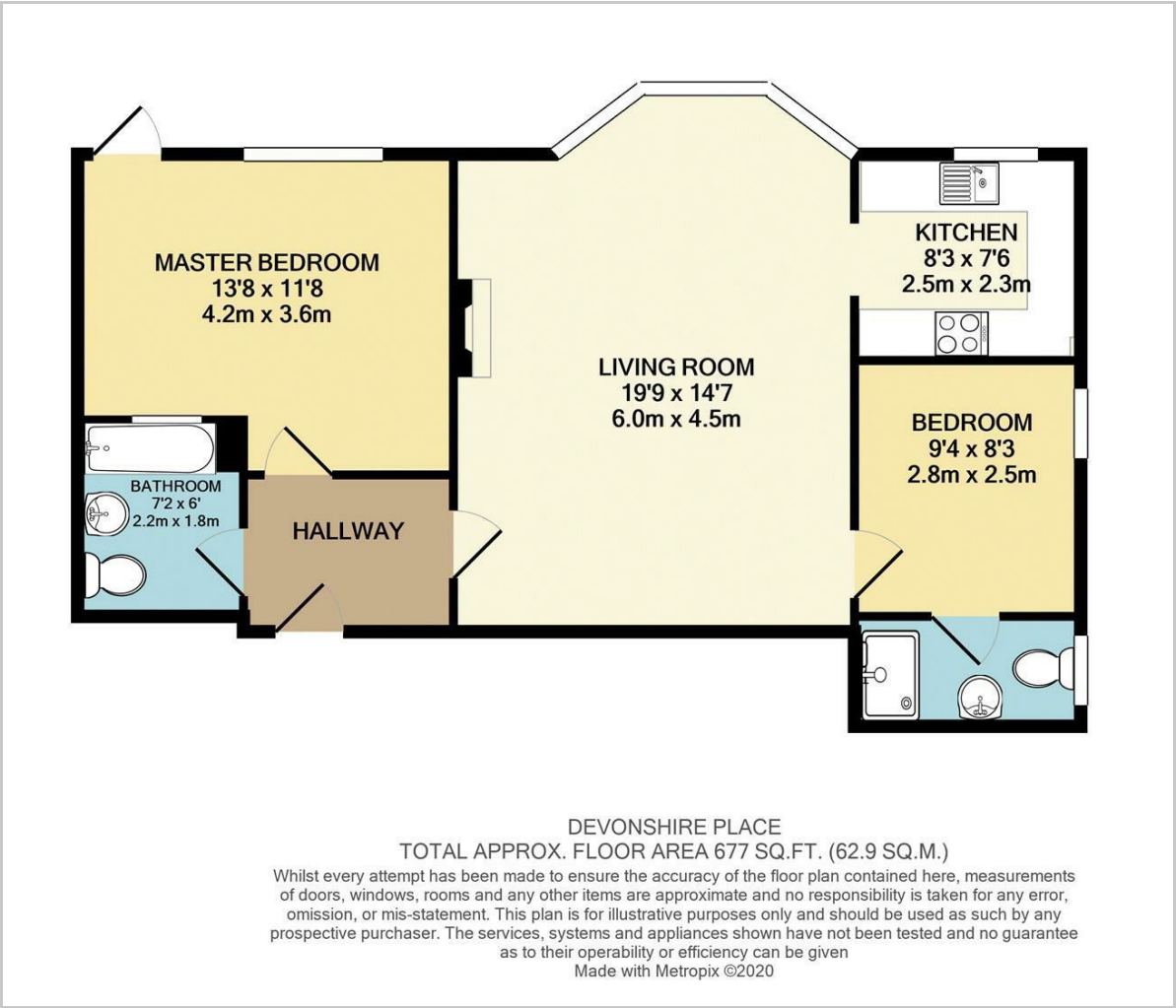
Council Tax - Band B £1879

Lease Information

The seller advises that the property is offered as a leasehold and has approximately 982 years remaining on the lease. The service charge is approximately £1,600 per annum.



Floor Plan



Viewing

Please contact us on 01323 723 500 if you wish to arrange a viewing appointment for this property or require further information.

These particulars, whilst believed to be accurate are set out as a general outline only for guidance and do not constitute any part of an offer or contract. Intending purchasers should not rely on them as statements of representation of fact, but must satisfy themselves by inspection or otherwise as to their accuracy. No person in this firms employment has the authority to make or give any representation or warranty in respect of the property.

Area Map



Energy Efficiency Graph

