



OAKFIELD

Jephson Close, Eastbourne, BN20 7JJ

£1,650 Per Month





## Jephson Close, Eastbourne, BN20 7JJ

A lovely three bedroom, mid-terrace town house available in the Meads area of Eastbourne. Being just a short walk from the seafront and town centre this is not one to be missed.

As you enter the home, a hallway leads to a ground-floor WC, with a spacious living room at the rear that opens onto an easy-to-maintain courtyard garden.

On the first floor, there are two storage cupboards and a well-sized kitchen/diner equipped with a dishwasher, washing machine, fridge/freezer, and freestanding cooker with a gas hob. Opposite the kitchen is the main double bedroom, featuring an en-suite with a walk-in shower and scenic views over Eastbourne.

The top floor offers a second double bedroom with a built-in wardrobe, three additional storage cupboards on the landing, a family bathroom with a shower over the bath, and a third double bedroom with impressive views of Eastbourne and the Sussex Downs.

Please note:  
An annual household income of £52,500 is required to meet the affordability criteria for this property.







### Living Room

11'9" x 12'7" (3.60 x 3.86)

### Kitchen

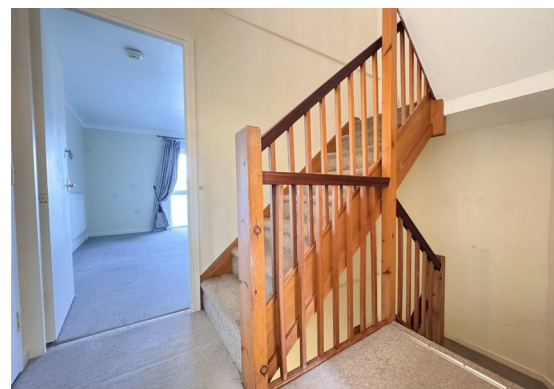
11'11" x 12'6" (3.64 x 3.83)

### Bedroom One

12'8" x 14'9" (3.87 x 4.52)

### En Suite

7'5" x 3'10" (2.27 x 1.19)



### Bedroom Two

11'10" x 12'7" (3.63 x 3.86)

### Bedroom Three

12'8" x 9'7" (3.87 x 2.93)

### Bathroom

8'2" x 4'11" (2.49 x 1.50)

### WC

2'9" x 3'10" (0.84 x 1.17)

**Council Tax Band D - £2,532.49 per annum**



Floor Plan

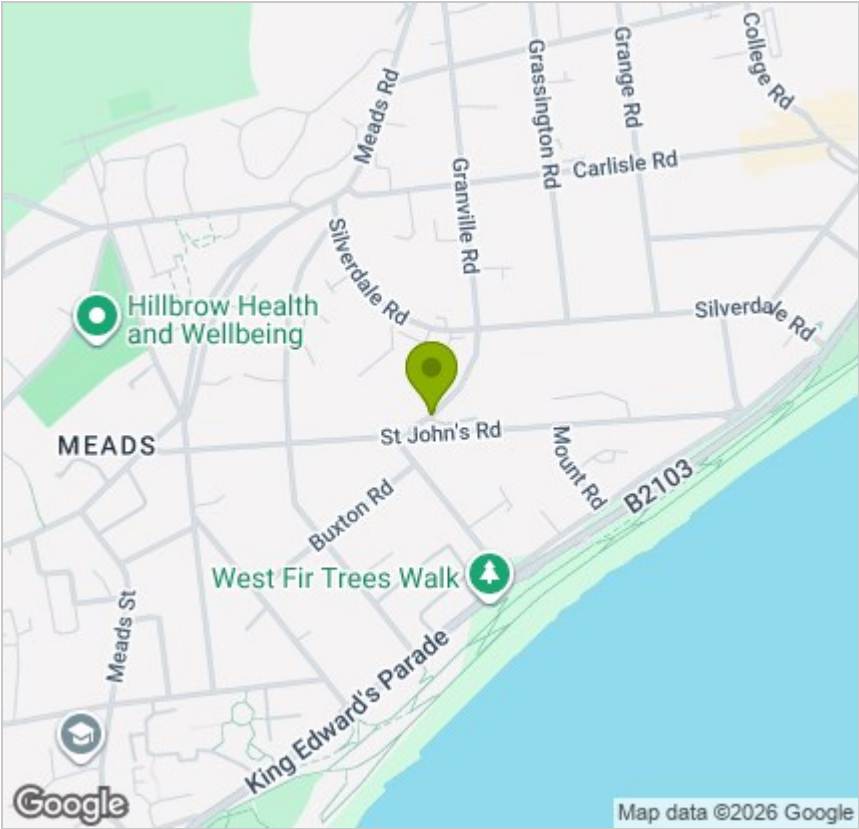


Viewing

Please contact us on 01323 405553 if you wish to arrange a viewing appointment for this property or require further information.

These particulars, whilst believed to be accurate are set out as a general outline only for guidance and do not constitute any part of an offer or contract. Intending purchasers should not rely on them as statements of representation of fact, but must satisfy themselves by inspection or otherwise as to their accuracy. No person in this firms employment has the authority to make or give any representation or warranty in respect of the property.

Area Map



Energy Efficiency Graph

