



OAKFIELD



Terminus Road, Eastbourne, BN21 3BB

£850 Per Calendar Month



Terminus Road, Eastbourne, BN21 3BB

This one-bedroom flat on Terminus Road is a great choice for anyone looking to rent in the heart of Eastbourne.

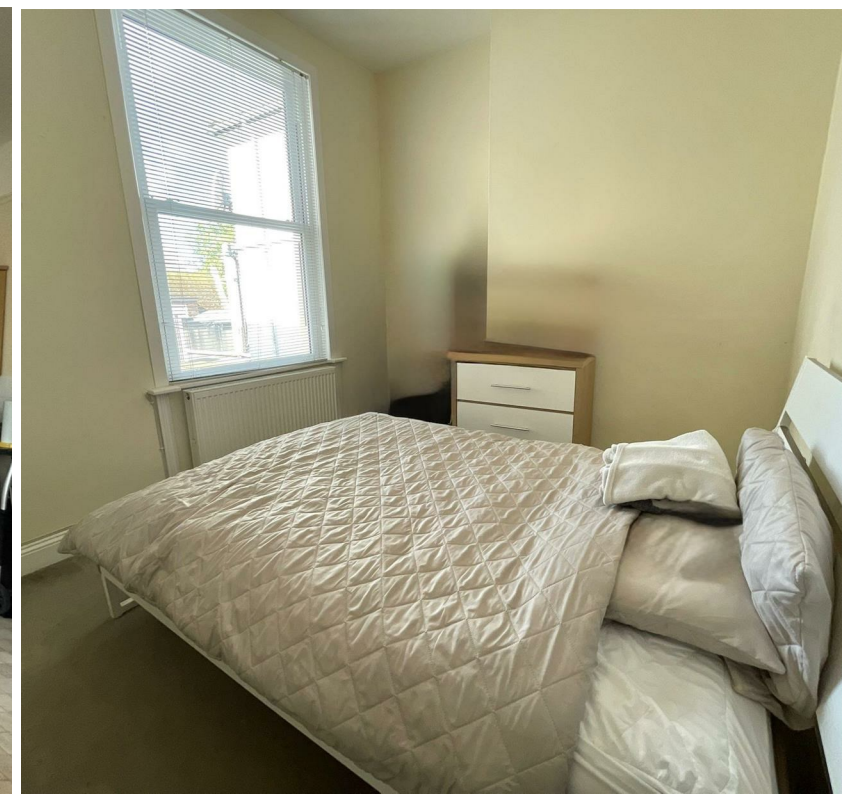
Situated just moments from the train station, town centre and the seafront, it's ideal for commuters, professionals or anyone who enjoys having shops, cafes, and restaurants right on their doorstep.

The flat itself offers a bright and comfortable living space with a good-sized open plan living kitchen space, a double bedroom, and a practical bathroom.

It's easy to maintain and well-suited to a single occupant or a couple. With its central location and everything you need close by, this property makes everyday living simple and convenient.

A guarantor is required for all applicants.

Please note:
An annual household income of £25,500pcm is required
The tenancy will begin with a 12 month initial term





Living/Kitchen

17'4" x 14'5" (5.3 x 4.4)

Bathroom

8'6" x 4'11" (2.6 x 1.5)

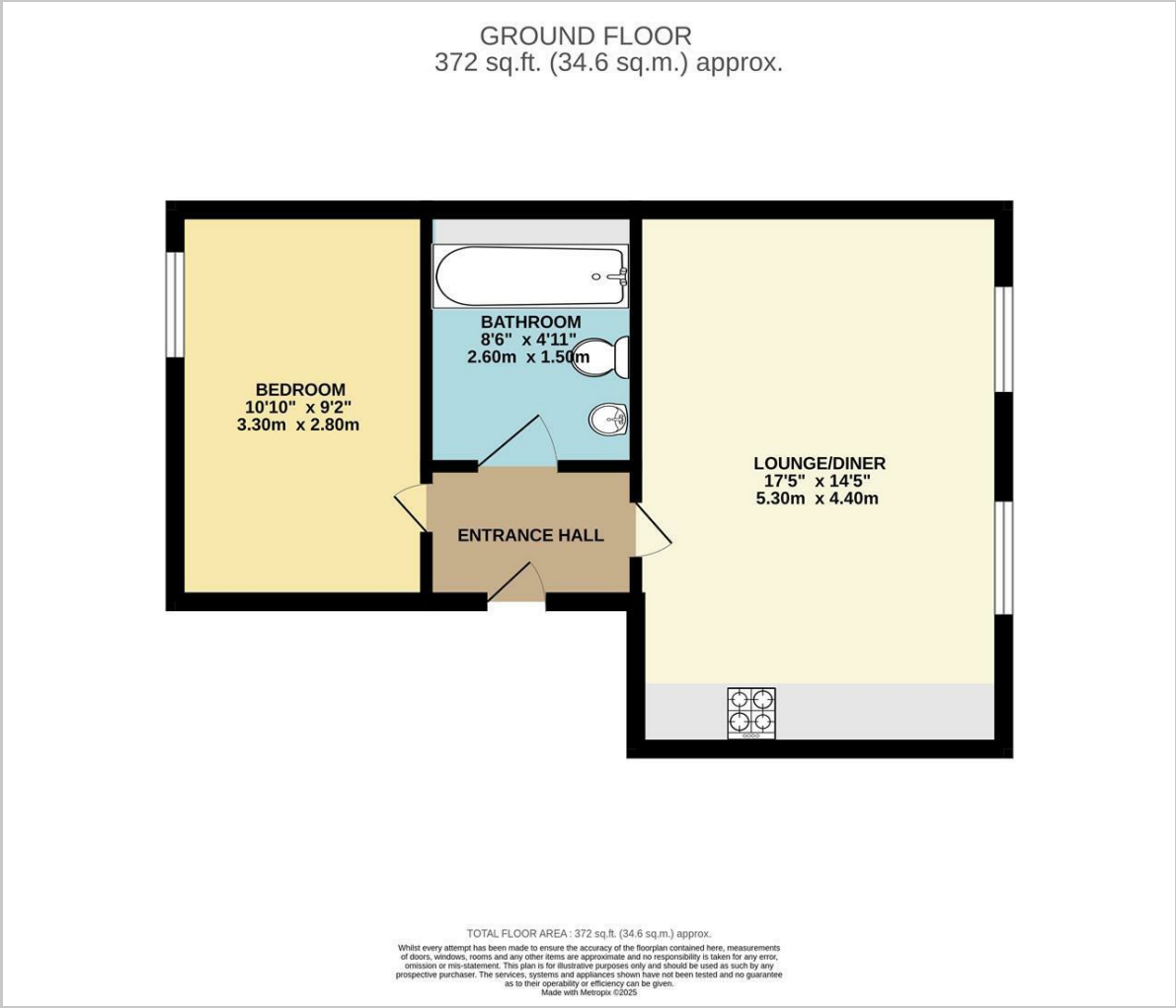
Bedroom

10'9" x 9'2" (3.3 x 2.8)

Council Tax Band A - £1688.32 per anum



Floor Plan

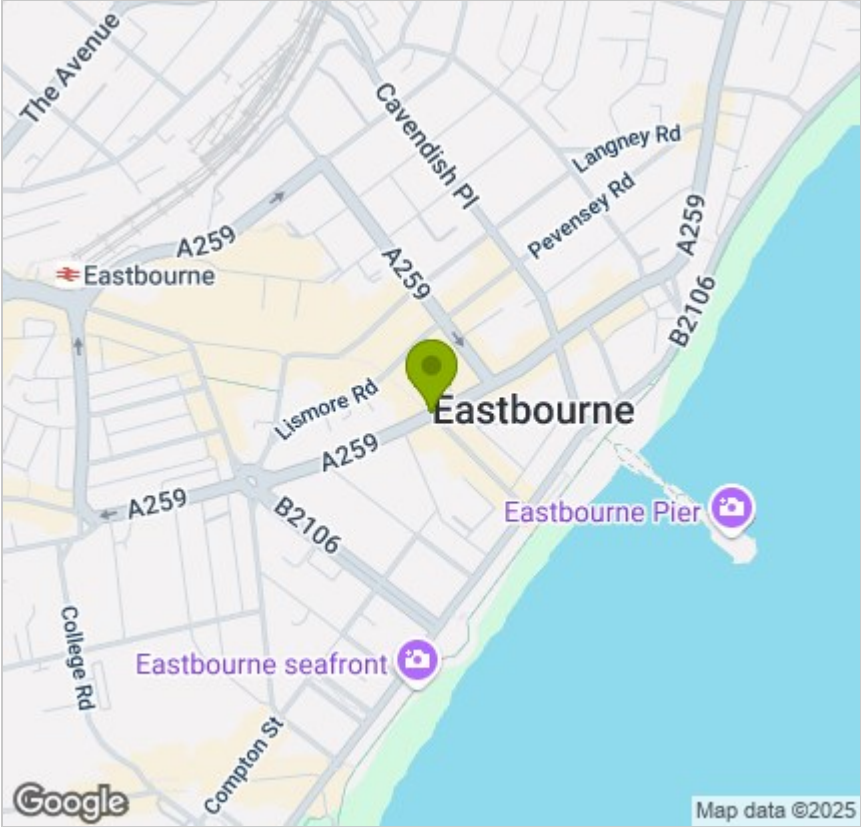


Viewing

Please contact us on 01323 405553
if you wish to arrange a viewing appointment for this property or require further information.

These particulars, whilst believed to be accurate are set out as a general outline only for guidance and do not constitute any part of an offer or contract. Intending purchasers should not rely on them as statements of representation of fact, but must satisfy themselves by inspection or otherwise as to their accuracy. No person in this firms employment has the authority to make or give any representation or warranty in respect of the property.

Area Map



Energy Efficiency Graph

