



OAKFIELD



Michel Grove, Eastbourne, BN21 1JZ

£1,150 Per Calendar Month



Michel Grove, Eastbourne, BN21 1JZ

Keymer house in Michel Grove, Eastbourne, offers this delightful ground floor flat that has recently been improved with new carpets, vinyl flooring and redecorations throughout!

Comprising a spacious living room with ample natural light, direct access to the well maintained communal gardens, plenty of storage to the kitchen, two well appointed double bedrooms and shower room to complete.

With its prime location in Eastbourne, residents can enjoy the benefits of nearby amenities, including shops, cafes, and transport links, making daily life both convenient and enjoyable.

Please note:
An annual household income of £34,500 per anum
The tenancy will begin with a 12 month initial term





Sitting/Dining Room

22'11" x 14'11" (7.01 x 4.57)

Kitchen

12'11" x 6'0" (3.96 x 1.83)

Master Bedroom

12'11" x 12'0" (3.96 x 3.66)

Bedroom Two

12'0" x 8'0" (3.66 x 2.44)

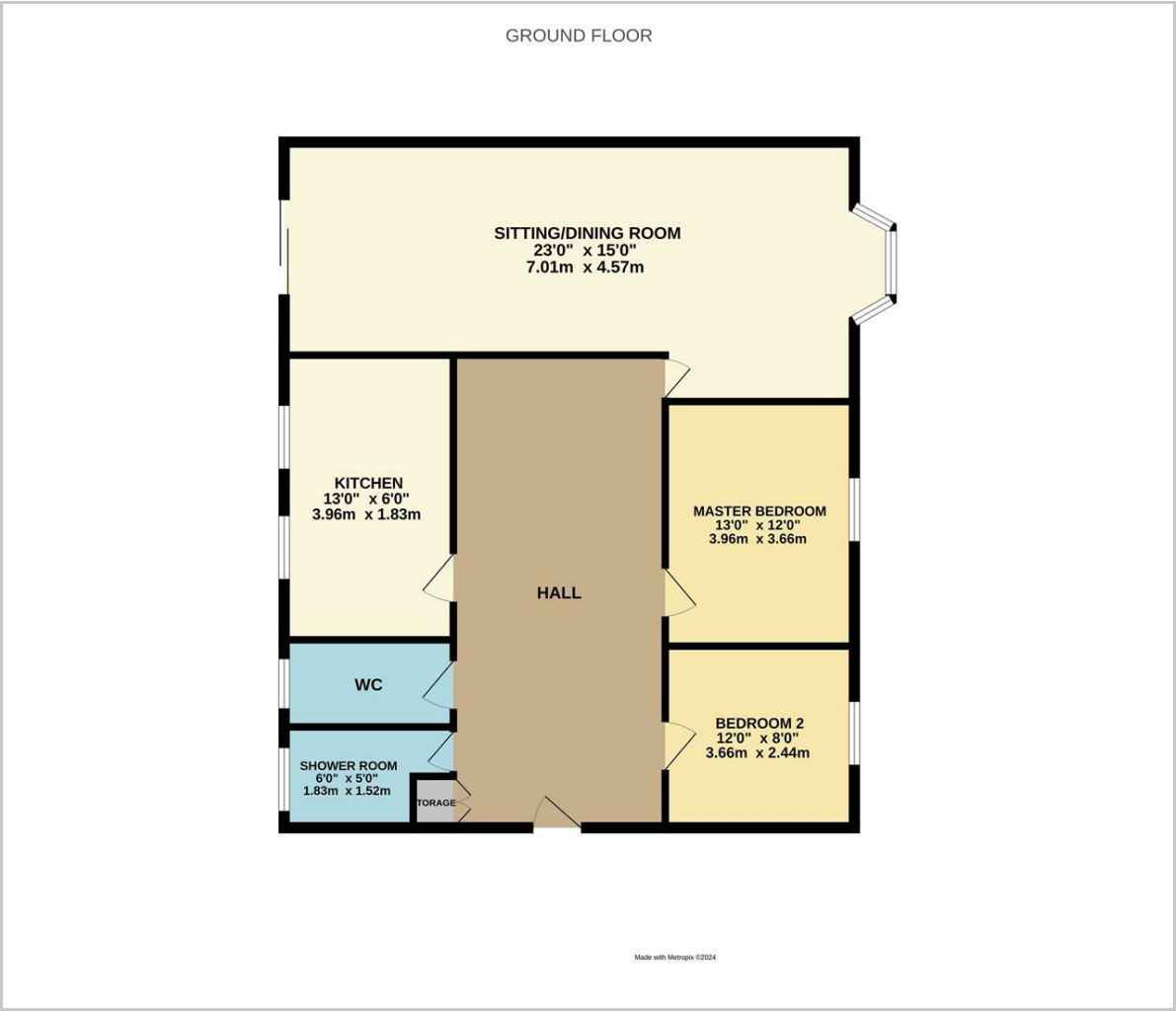
Shower Room

6'0" x 4'11" (1.83 x 1.52)

Council Tax Band C - £2251.10 Per annum



Floor Plan

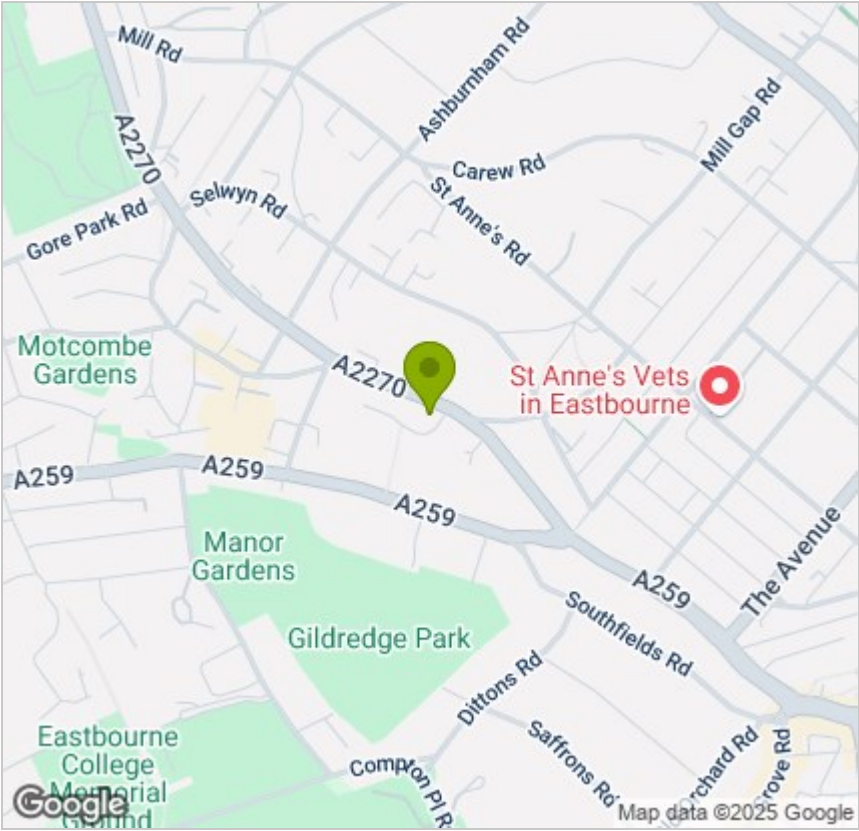


Viewing

Please contact us on 01323 405553 if you wish to arrange a viewing appointment for this property or require further information.

These particulars, whilst believed to be accurate are set out as a general outline only for guidance and do not constitute any part of an offer or contract. Intending purchasers should not rely on them as statements of representation of fact, but must satisfy themselves by inspection or otherwise as to their accuracy. No person in this firms employment has the authority to make or give any representation or warranty in respect of the property.

Area Map



Energy Efficiency Graph

