



OAKFIELD



Lushington Lane, Eastbourne, BN21 4LJ

£1,200 Per Calendar Month





## Lushington Lane, Eastbourne, BN21 4LJ

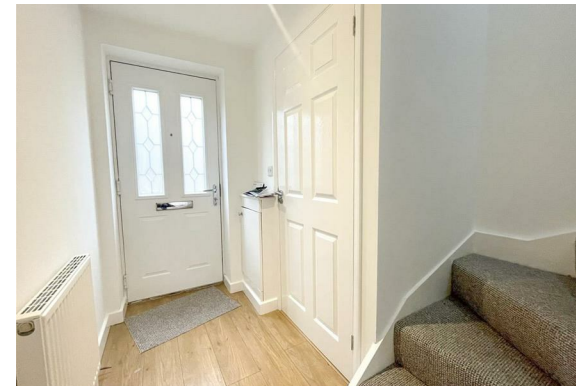
This terraced house on Lushington Lane offers an ideal opportunity for first-time buyers or investors.

With its prime location right in the town centre, residents will enjoy easy access to a variety of shops, restaurants, and local amenities.

The property features two well-proportioned bedrooms, providing ample space for relaxation and rest. The layout includes a welcoming reception room, separate kitchen and a small outside space to the rear.

This home combines comfort and practicality, making it a wonderful choice for anyone looking to establish themselves in Eastbourne.

With its appealing features and fantastic location, this terraced house is not to be missed. Whether you are embarking on your journey as a homeowner or seeking a promising investment opportunity, this property is sure to meet your needs.







### Living Room

13'7x10'6 (4.14mx3.20m)

### Kitchen

7'10x6'2 (2.39mx1.88m)

### Bedroom Two

10'2 x 6'8 (3.10m x 2.03m)

### Bedroom One

13'7 x 8'10 (4.14m x 2.69m)

**Council Tax Band C - £2,148 per annum**



Floor Plan



Viewing

Please contact us on 01323 405553 if you wish to arrange a viewing appointment for this property or require further information.

These particulars, whilst believed to be accurate are set out as a general outline only for guidance and do not constitute any part of an offer or contract. Intending purchasers should not rely on them as statements of representation of fact, but must satisfy themselves by inspection or otherwise as to their accuracy. No person in this firms employment has the authority to make or give any representation or warranty in respect of the property.

Area Map



Energy Efficiency Graph

