



OAKFIELD



Willow Herb Way, Stone Cross, Pevensey, BN24 5FZ

£1,850 Per Calendar Month



Willow Herb Way, Stone Cross, Pevensey, BN24 5FZ

This well-presented four-bedroom detached family home is located in the sought-after Willow Herb Way, Stone Cross.

The property offers a generous living space, starting with a spacious and light-filled living room, perfect for both relaxing and entertaining with direct access to the private west facing rear garden – an excellent spot for outdoor dining and enjoyment. The modern kitchen features built-in appliances, with plenty of room for a dining area. The downstairs further benefits from a cloakroom and under stairs storage.

Upstairs, the master bedroom is a comfortable retreat, complete with an en-suite shower room. The additional three bedrooms are also well-proportioned with two doubles and a smaller single bedroom all are served by a family bathroom.

Externally, the house is complemented by a block-paved driveway, offering off-road parking for multiple vehicles, as well as a garage that can be used for storage.

Located in a quiet yet accessible area, this home is within easy reach of local schools, shops, and transport links, making it an ideal choice for families. With its modern design and practical layout, this property provides everything needed for comfortable, contemporary living.

Further benefits include: underfloor heating on all tiled surfaces (kitchen, dining, hallway, all bathrooms and cloakroom) and the property is also available part furnished with storage.

Please note:
The tenancy will begin with a 12 month initial term
An annual household income of £57,750 per annum is required to pass affordability requirements.





Living Room

16'8" x 14'8" (5.10 x 4.49)

Kitchen/Dining Area

15'10" x 9'4" (4.85 x 2.86)

Bedroom One

10'3" x 9'8" (3.14 x 2.97)

Bedroom Two

9'8" x 8'3" (2.96 x 2.54)

Bedroom Three

11'5" x 6'1" (3.48 x 1.87)

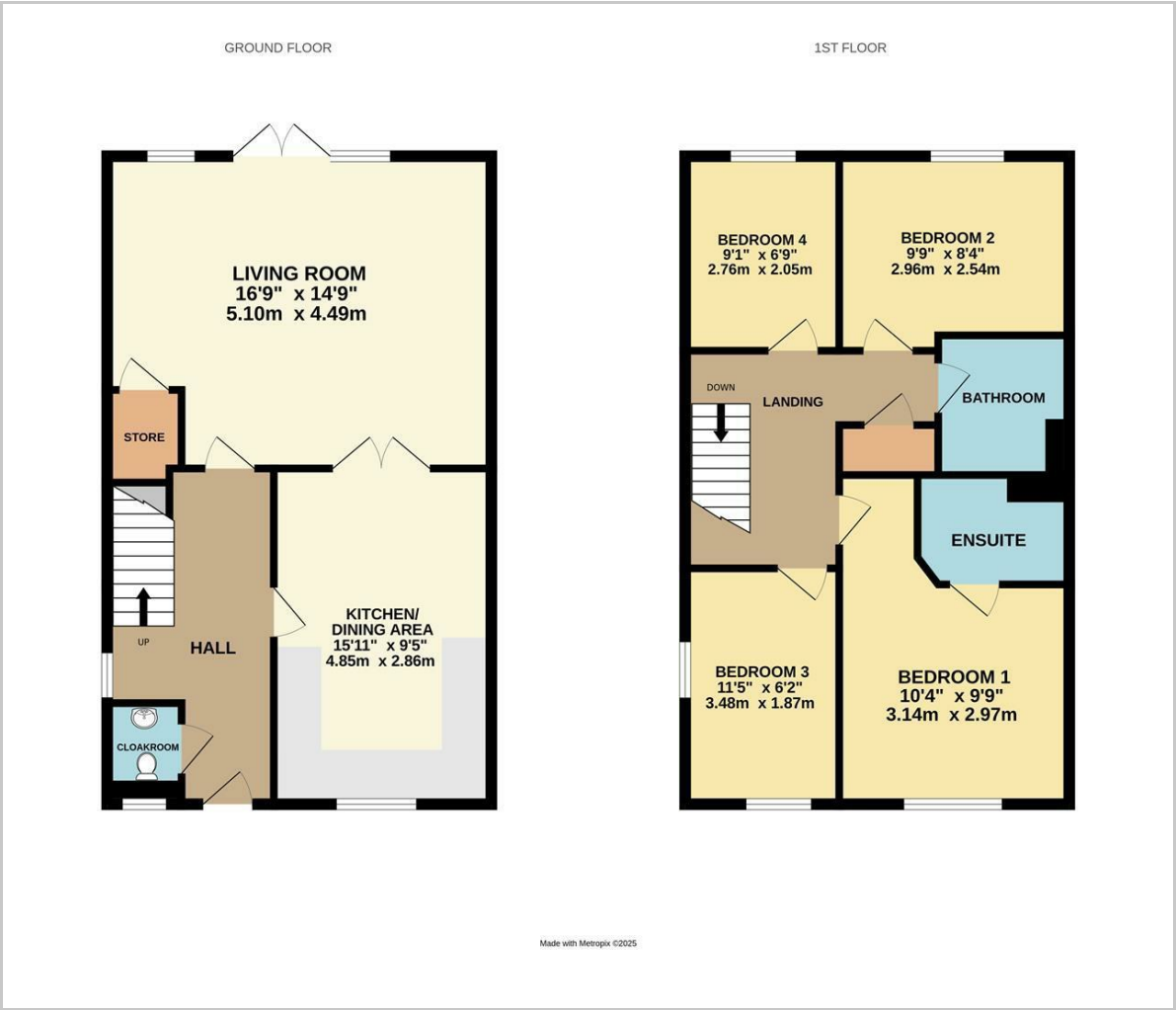
Bedroom Four

9'0" x 6'8" (2.76 x 2.05)

Council Tax Band E



Floor Plan

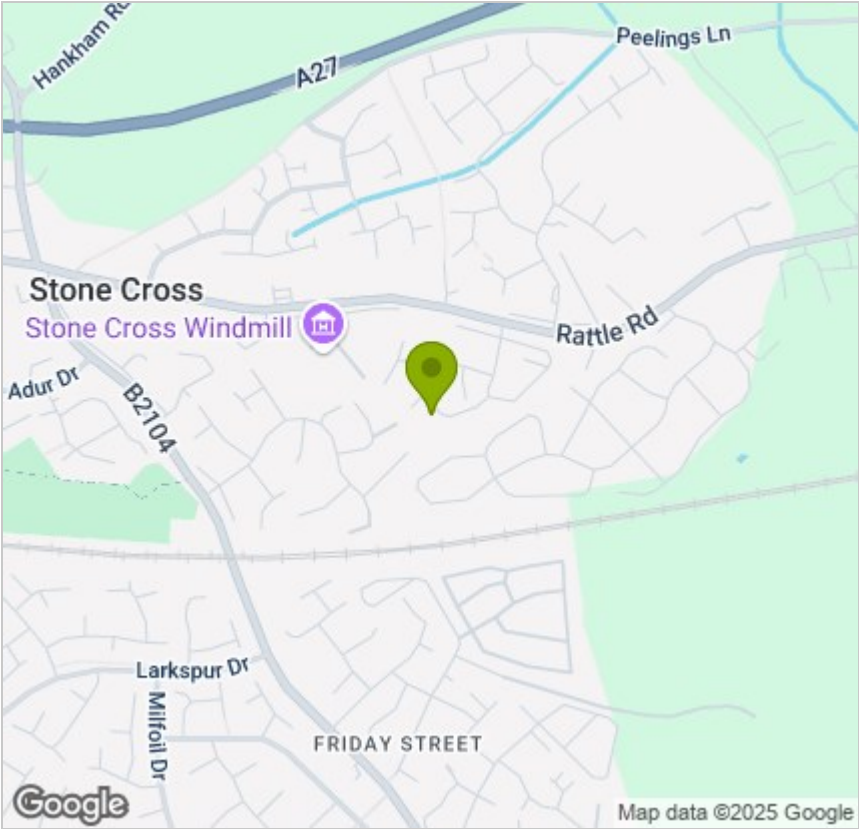


Viewing

Please contact us on 01323 405553 if you wish to arrange a viewing appointment for this property or require further information.

These particulars, whilst believed to be accurate are set out as a general outline only for guidance and do not constitute any part of an offer or contract. Intending purchasers should not rely on them as statements of representation of fact, but must satisfy themselves by inspection or otherwise as to their accuracy. No person in this firms employment has the authority to make or give any representation or warranty in respect of the property.

Area Map



Energy Efficiency Graph

