



OAKFIELD



Royal Parade, Eastbourne, BN22 7AX

£1,175 Per Calendar Month



Royal Parade, Eastbourne, BN22 7AX

BRILLANT SEA VIEWS....A lovely third floor, two bedroom flat overlooking Eastbourne's vibrant seafront. Coming with the most picturesque views we cannot imagine this will be on the market long.

Comprising a bright and spacious living room with sliding doors giving a wonderful view and access to a perfectly positioned balcony, open plan kitchen, two double bedrooms and a convenient Jack and Jill shower room.

Please Note:

An annual household income of £35,250 is required to meet the affordability criteria for this property.

The tenancy will start with a 12 month initial term





Living Room

7.20 x 2.84 (23'7" x 9'3")

Kitchen

3.52 x 2.10 (11'6" x 6'10")

Bedroom One

4.12 x 3.33 (13'6" x 10'11")

Bedroom Two

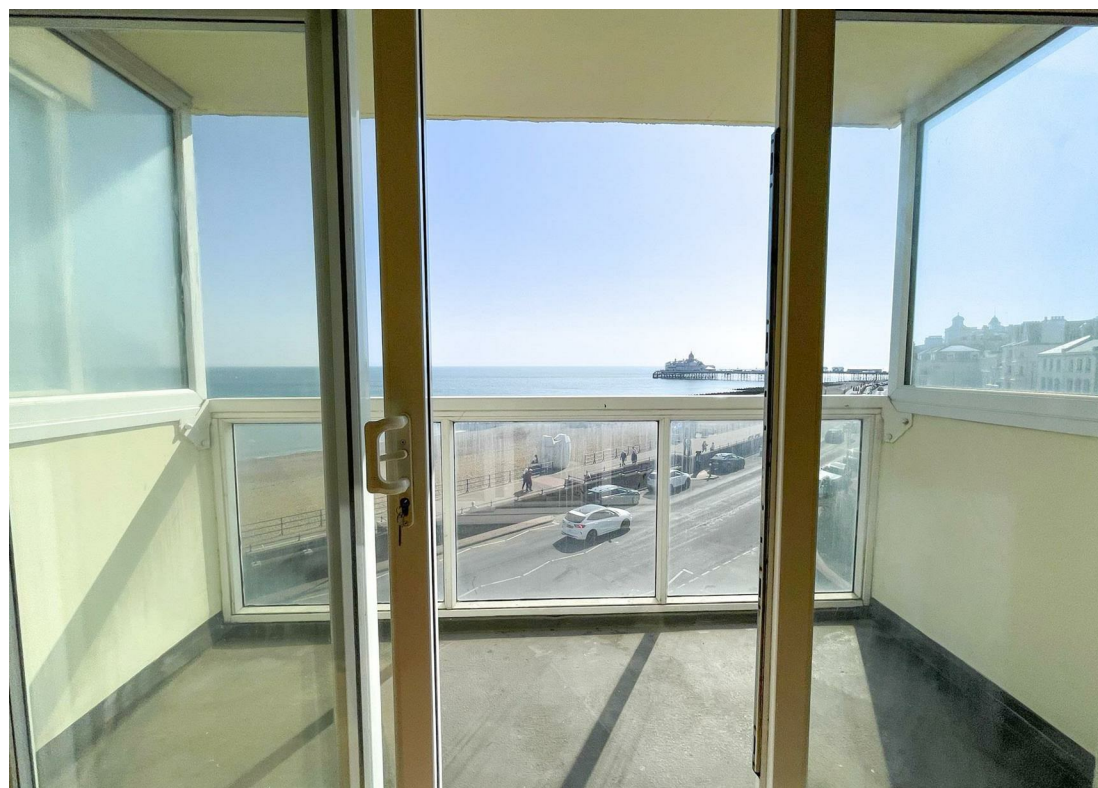
4.38 x 2.25 (14'4" x 7'4")



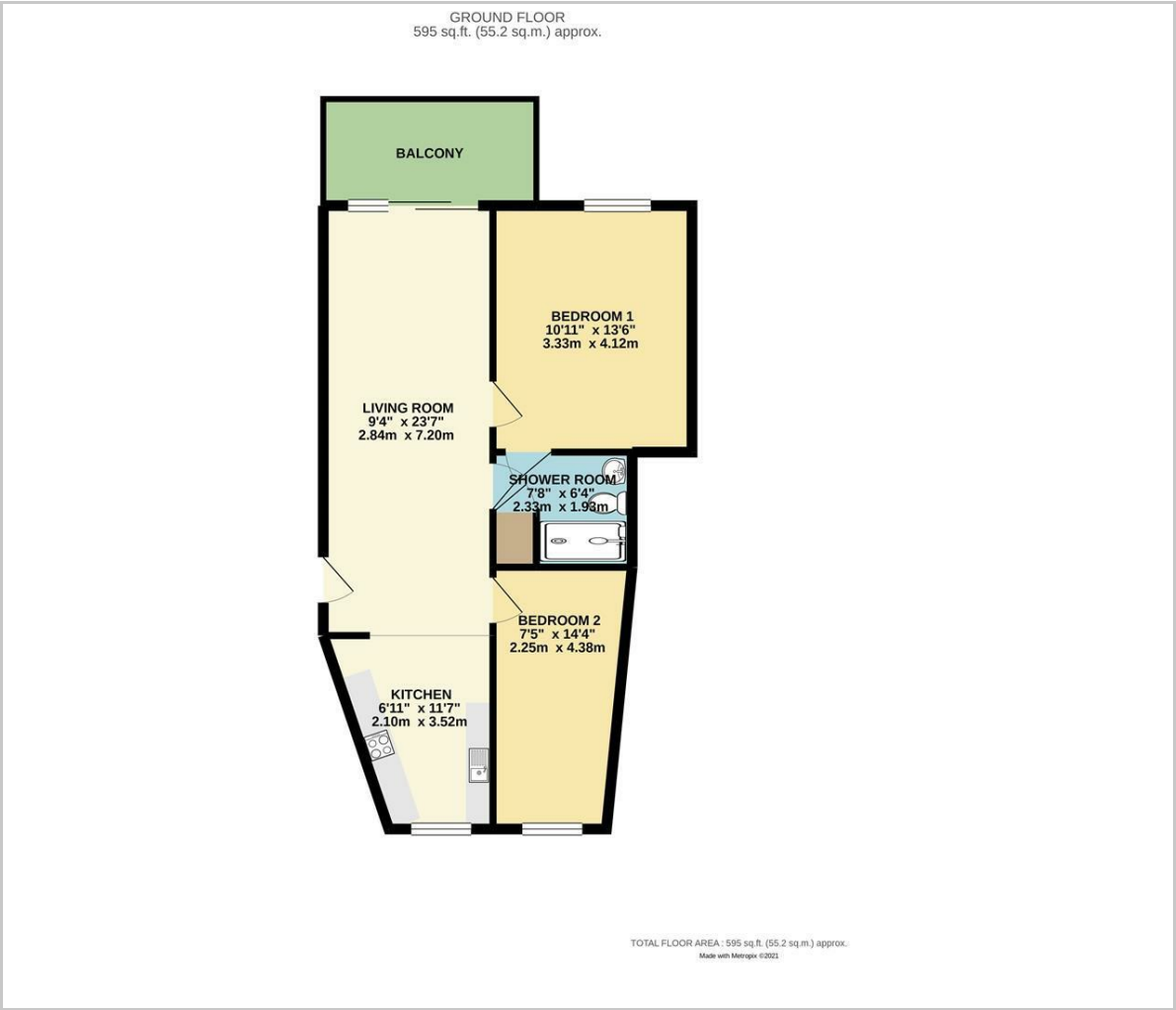
Shower Room

2.33 x 1.93 (7'7" x 6'3")

Council Tax Band C - £2148



Floor Plan



Viewing

Please contact us on 01323 405553
if you wish to arrange a viewing appointment for this property or require further information.

These particulars, whilst believed to be accurate are set out as a general outline only for guidance and do not constitute any part of an offer or contract. Intending purchasers should not rely on them as statements of representation of fact, but must satisfy themselves by inspection or otherwise as to their accuracy. No person in this firms employment has the authority to make or give any representation or warranty in respect of the property.

Area Map



Energy Efficiency Graph

