



OAKFIELD



Upperton Gardens, Eastbourne, BN21 2AF

£900 Per Calendar Month



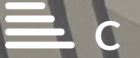
1



1



1



c

## Upperton Gardens, Eastbourne, BN21 2AF

Newly improved throughout!

This well presented one bedroom flat ideally located in central Eastbourne would make an ideal home for anyone looking to be close to public transport links and local amenities.

The property has had numerous improvements throughout with new carpets and a full redecoration throughout.

Both the bedroom and living room give ample space for furnishing. The bathroom is fitted with a shower over bath, WC and hand basin with kitchen to the opposite end giving a fair amount of worktop and storage space.

Further benefits include on street free parking and freshly painted communal hallways.

Please note  
An annual household income of £27,000 is required to meet the affordability criteria for this property.  
The tenancy will start with an initial 12 month term





**Living Room**

10'11" x 11'11" (3.33 x 3.64)

**Bedroom**

11'11" x 10'1" (3.64 x 3.09)

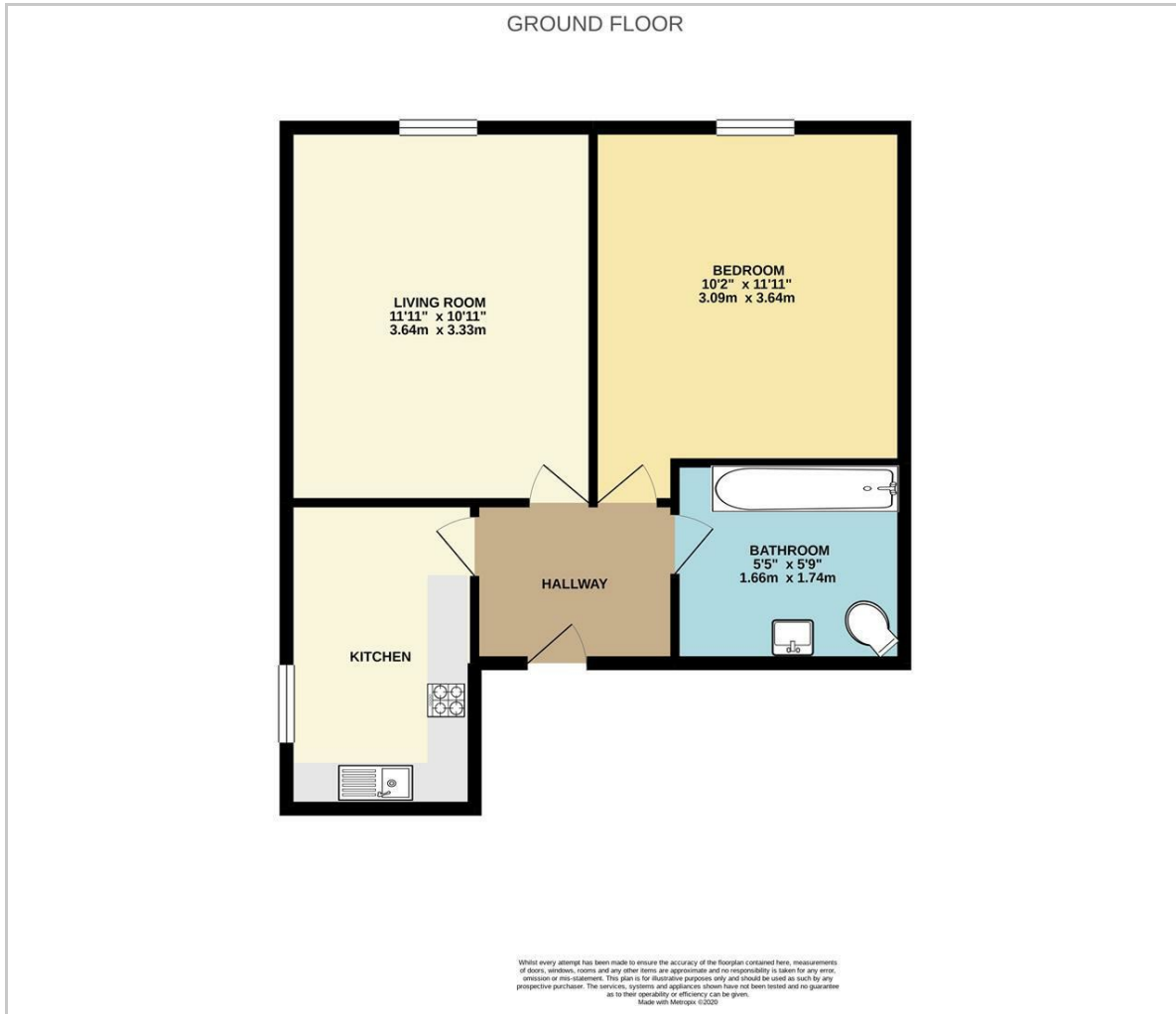
**Bathroom**

5'8" x 5'5" (1.74 x 1.66)

**Council Tax Band A - £1611**



## Floor Plan

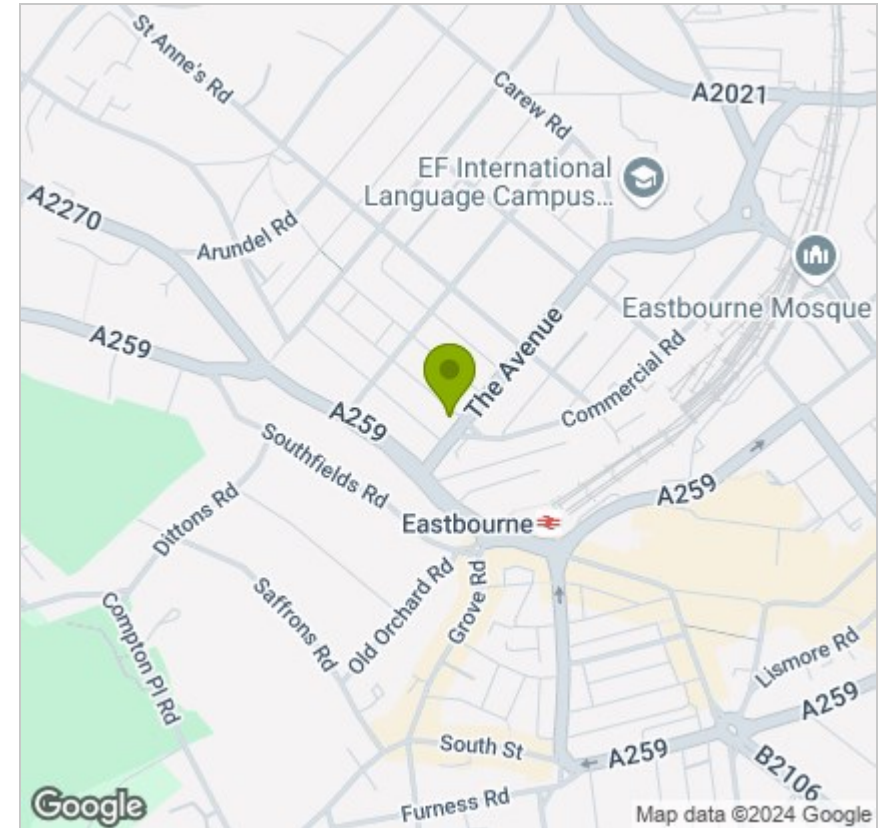


## Viewing

Please contact us on 01323 405553 if you wish to arrange a viewing appointment for this property or require further information.

These particulars, whilst believed to be accurate are set out as a general outline only for guidance and do not constitute any part of an offer or contract. Intending purchasers should not rely on them as statements of representation of fact, but must satisfy themselves by inspection or otherwise as to their accuracy. No person in this firm's employment has the authority to make or give any representation or warranty in respect of the property.

## Area Map



## Energy Efficiency Graph

