



OAKFIELD



Longstone Road, Eastbourne, BN21 3SJ

Offers In Excess Of £155,000



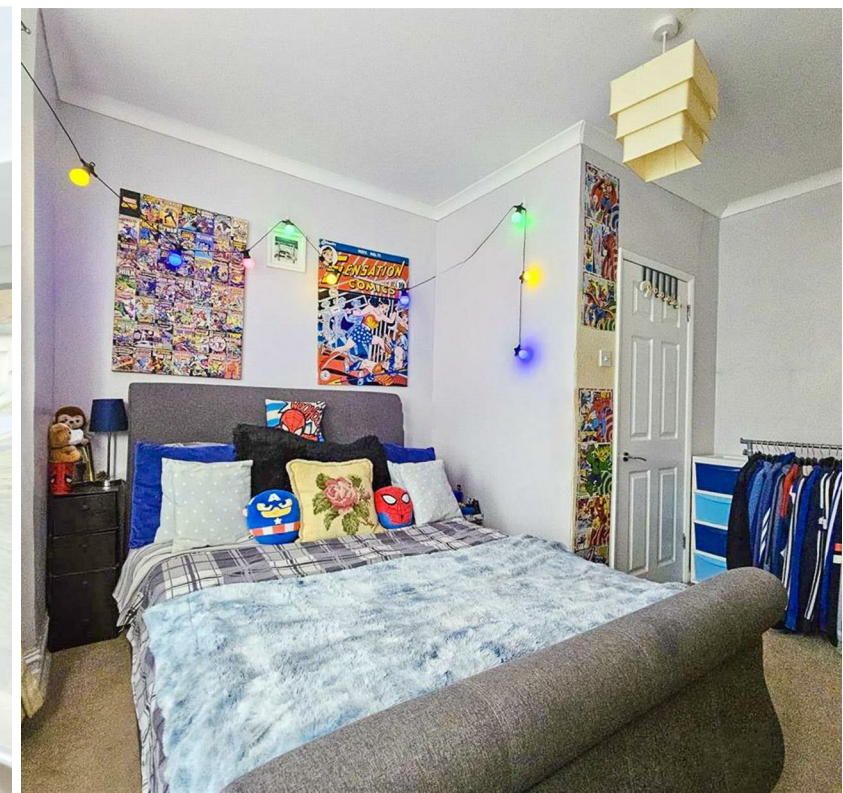
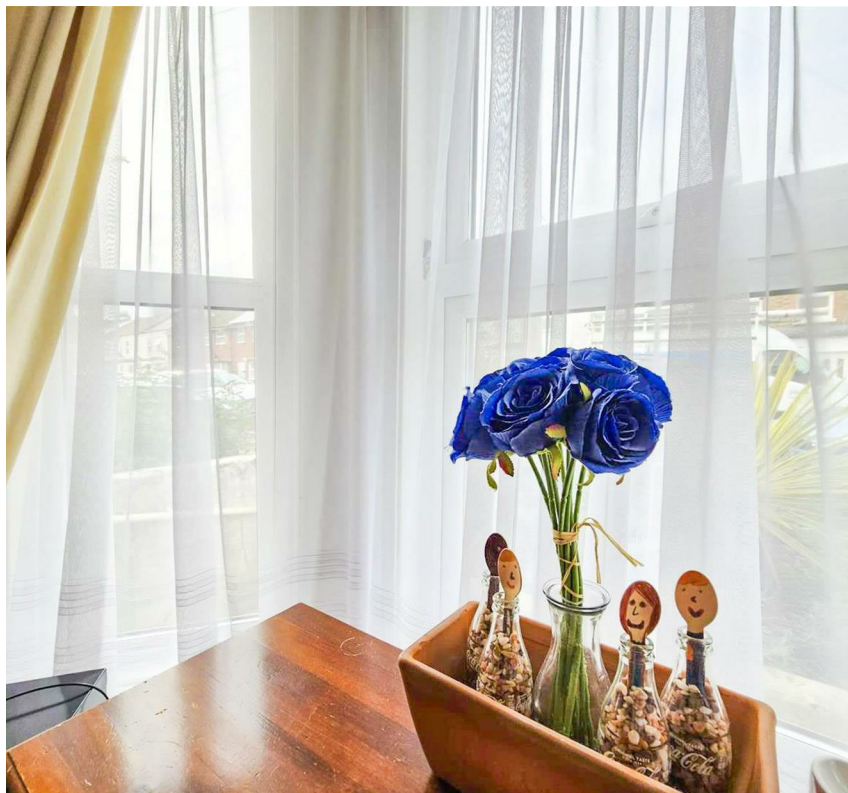
Longstone Road, Eastbourne, BN21 3SJ

A one-bedroom garden flat located on Longstone Road in the heart of Eastbourne. This property is perfect for those seeking a place in a town centre location.

As you step into this well placed property, you'll be greeted by a cosy living space that offers a perfect blend of comfort and style. The bedroom provides a peaceful sanctuary, ideal for relaxation after a long day.

One of the highlights of this property is the large garden, a rare find in a town centre location. A peaceful retreat with the convenience of being close to the town centre. Whether you're a nature lover, a city enthusiast, or a bit of both, this garden flat is sure to capture your heart.

Don't miss the opportunity to make this charming garden flat your own. Contact us today to arrange a viewing and take the first step towards your new home in Eastbourne.





Living Room

12'11" x 12'4" (3.94 x 3.78)

Kitchen

8'9" x 8'7" (2.69 x 2.62)

Bedroom

14'11" x 12'2" (4.55 x 3.73)

Council Tax Band A

Lease Information

The seller advises that the property is offered as leasehold and has approximately 106 years remaining on the lease. The service charge is approximately £250 per annum and a ground rent charge of £400.



Floor Plan



Viewing

Please contact us on 01323 723 500 if you wish to arrange a viewing appointment for this property or require further information.

These particulars, whilst believed to be accurate are set out as a general outline only for guidance and do not constitute any part of an offer or contract. Intending purchasers should not rely on them as statements of representation of fact, but must satisfy themselves by inspection or otherwise as to their accuracy. No person in this firms employment has the authority to make or give any representation or warranty in respect of the property.

Area Map



Energy Efficiency Graph

