



OAKFIELD



Susans Road, Eastbourne, BN21 3AG

£1,150 Per Calendar Month



2



2



1



D

Susans Road, Eastbourne, BN21 3AG

Welcome to Susans Road, Eastbourne - a charming town centre property built in 2009 that boasts two bedrooms, two bathrooms, and a spacious living space. This delightful home features a large balcony, perfect for enjoying a morning cup of tea or hosting a small gathering with friends.

Situated in the heart of Eastbourne, this property offers the convenience of city living with easy access to local amenities, shops, and restaurants. The two well-appointed bedrooms provide ample space for relaxation and privacy, while the two bathrooms ensure convenience for both residents and guests.

Whether you're looking for a cozy home to settle down in or a stylish space to entertain, this property on Susans Road has something for everyone. Don't miss out on the opportunity to make this lovely abode your own - schedule a viewing today and envision the possibilities that await in this inviting Eastbourne residence.

The tenancy will begin with a 12 month initial term
An annual house hold income of £36,000 is required to pass the affordability requirements.





Lounge/Kitchen
25'8" x 11'1" (7.83 x 3.40)

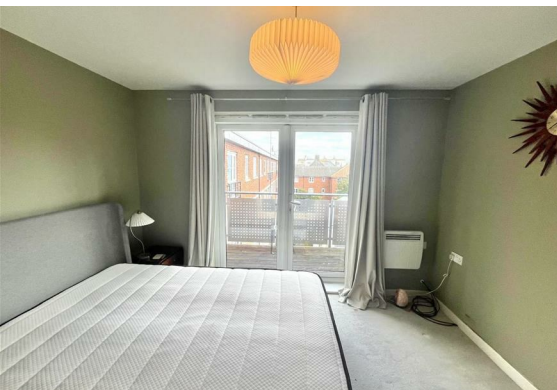
Bedroom
13'3" x 12'7" (4.06 x 3.84)

Bedroom
12'2" x 10'2" (3.73 x 3.11)

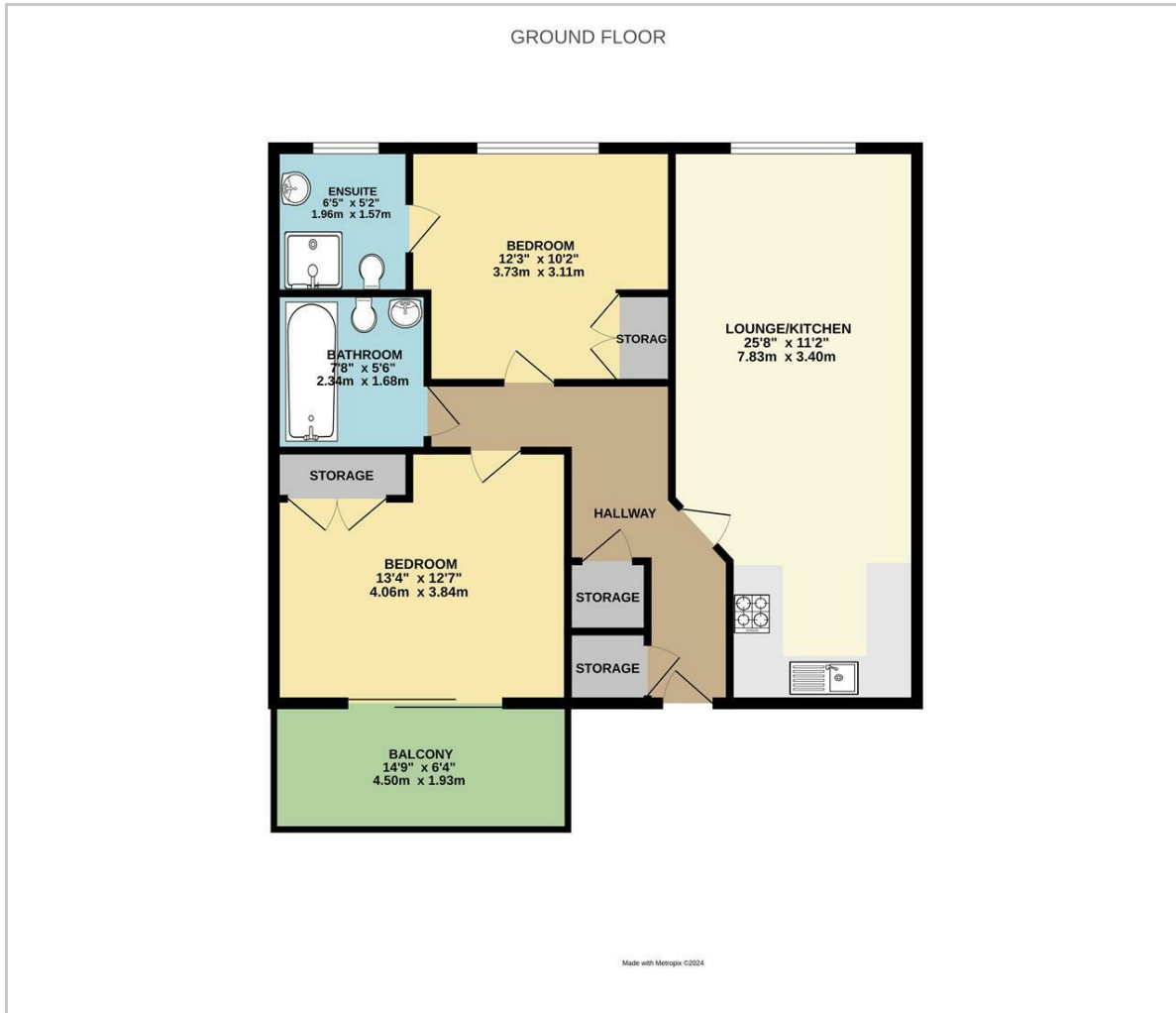
Ensuite
6'5" x 5'1" (1.96 x 1.57)

Bathroom
7'8" x 5'6" (2.34 x 1.68)

Council Tax Band B - £1879



Floor Plan



Viewing

Please contact us on 01323 405553 if you wish to arrange a viewing appointment for this property or require further information.

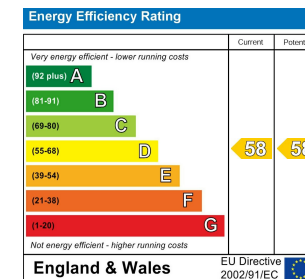
These particulars, whilst believed to be accurate are set out as a general outline only for guidance and do not constitute any part of an offer or contract. Intending purchasers should not rely on them as statements of representation of fact, but must satisfy themselves by inspection or otherwise as to their accuracy. No person in this firm's employment has the authority to make or give any representation or warranty in respect of the property.

35 Cornfield Road, Eastbourne, East Sussex, BN21 4QG
eastbourne@oakfieldproperty.co.uk

Area Map



Energy Efficiency Graph



01323 405553
www.oakfieldproperty.co.uk