



OAKFIELD



Warrior Square, Eastbourne, BN22 7DB

Asking Price £275,000

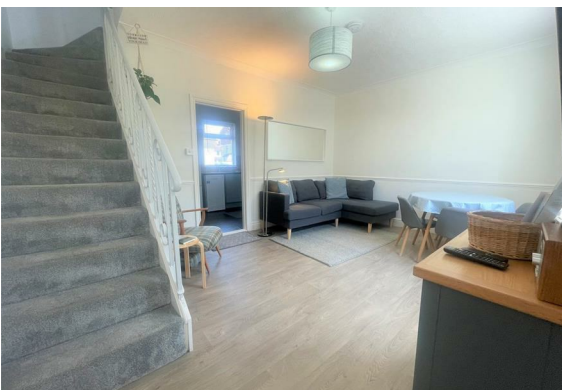


Warrior Square, Eastbourne, BN22 7DB

This two bedroom terrace house in Warrior Square, Eastbourne is a delightful home and has been styled beautifully. Situated in a private historical square- The location is ideal for those who want to be close to the town centre and Eastbourne's vibrant seafront, with a range of shops, restaurants and cafes nearby, as well as easy access to the beach and other local attractions.

The south facing front garden gives a welcoming entrance into the property whilst providing a peaceful and attractive space to relax and enjoy the sunshine. It features a cosy reception room, a well-equipped modern kitchen, a downstairs WC and a small back patio garden.

The master bedroom is a spacious and comfortable room. The built-in wardrobes provide ample storage space, and the archway adds a touch of character and charm to the room. The smaller bedroom is a cozy double, perfect for a child's room or an office.





Living/Dining

14'11" x 10'0" (4.57 x 3.05)

Kitchen

8'0" x 8'0" (2.44 x 2.44)

WC

6'0" x 2'6" (1.83 x 0.78)

Bedroom One

14'11" x 8'0" (4.57 x 2.44)



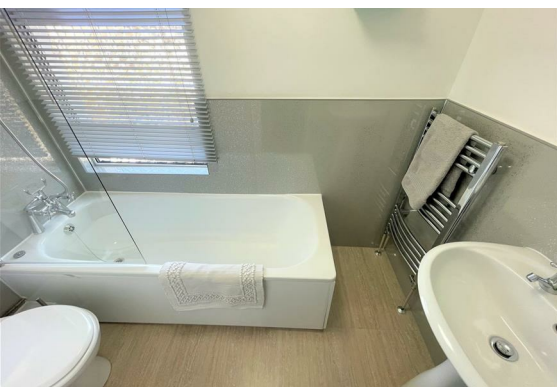
Bedroom Two

8'11" x 6'11" (2.74 x 2.13)

Bathroom

7'1" x 4'5" (2.18 x 1.37)

Council Tax Band B - £1794.93



Floor Plan

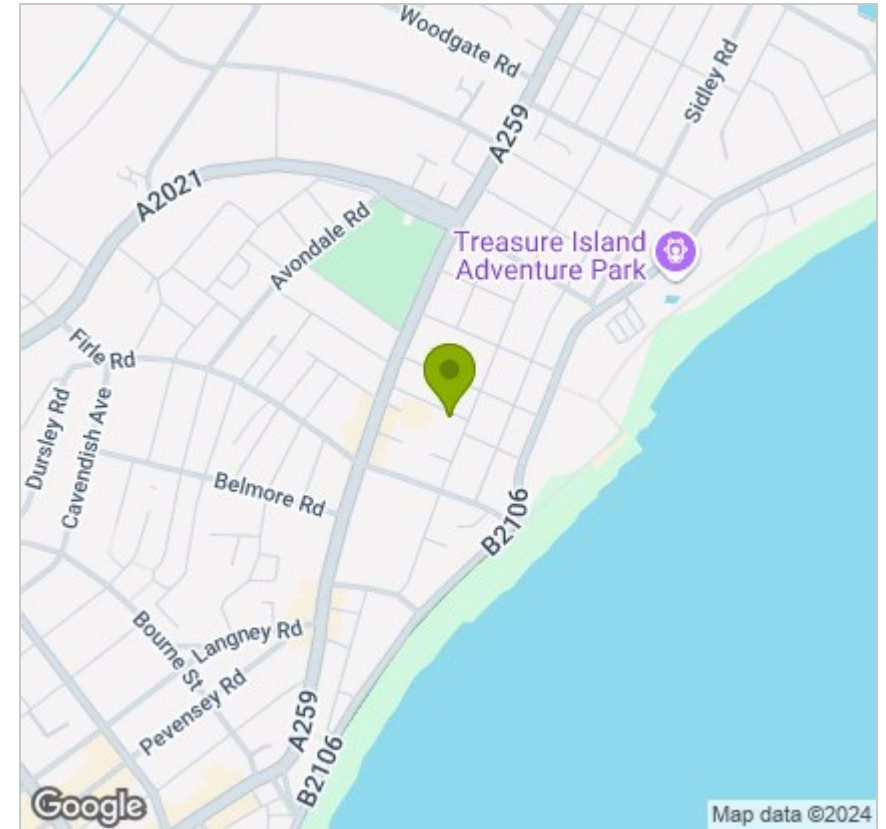


Viewing

Please contact us on 01323 723 500 if you wish to arrange a viewing appointment for this property or require further information.

These particulars, whilst believed to be accurate are set out as a general outline only for guidance and do not constitute any part of an offer or contract. Intending purchasers should not rely on them as statements of representation of fact, but must satisfy themselves by inspection or otherwise as to their accuracy. No person in this firm's employment has the authority to make or give any representation or warranty in respect of the property.

Area Map



Energy Efficiency Graph

